

**Powering Innovation and the Green Energy Revolution with High-Purity
Natural Flake Graphite Solutions**



Legal Disclaimer

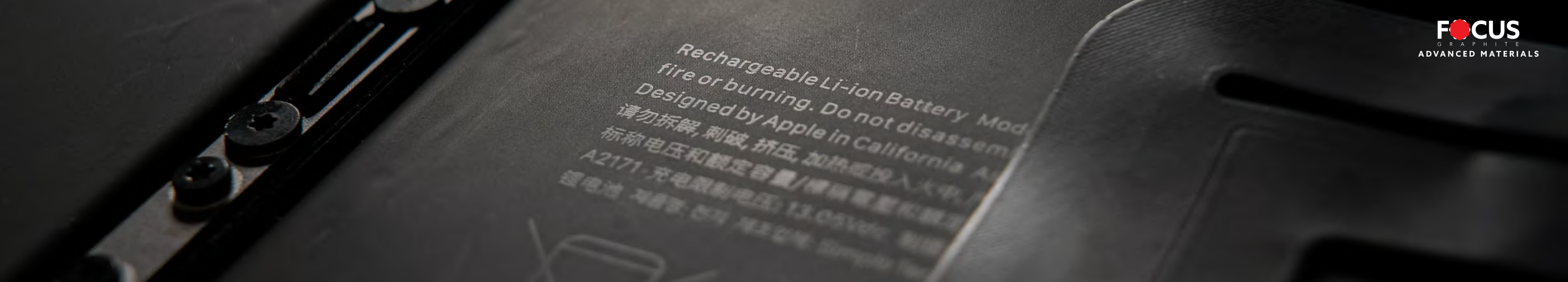
This presentation contains “forward-looking information” within the meaning of Canadian securities legislation. All information contained herein that is not clearly historical in nature may constitute forward-looking information. Generally, such forward-looking information can be identified by the use of forward-looking terminology such as “plans”, “expects” or “does not expect”, “is expected”, “budget”, “scheduled”, “estimates”, “forecasts”, “intends”, “anticipates” or “does not anticipate”, or “believes”, or variations of such words and phrases or state that certain actions, events or results “may”, “could”, “would”, “might” or “will be taken”, “occur” or “be achieved”. Forward-looking information is subject to known and unknown risks, uncertainties and other factors that may cause the actual results, level of activity, performance or achievements of the Company to be materially different from those expressed or implied by such forward-looking information, including but not limited to: (i) risks relating to widespread epidemics or pandemic outbreak including the COVID-19 pandemic; the impact of COVID-19 on our workforce, consultants, suppliers and other essential resources and what effect those impacts, if they occur, would have on our business; (ii) volatile stock price; (iii) the general global markets and economic conditions; (iv) the possibility of write-downs and impairments; (v) the risk associated with exploration, development and operations of mineral deposits; (vi) the risk associated with establishing title to mineral properties and assets; (vii) the risks associated with entering into joint ventures; (viii) fluctuations in commodity prices; (ix) the risks associated with uninsurable risks arising during the course of exploration, development and production; (x) competition faced by the resulting issuer in securing experienced personnel and financing; (xi) access to adequate infrastructure to support mining, processing, development and exploration activities; (xii) the risks associated with changes in the mining regulatory regime governing the resulting issuer; (xiii) the risks associated with the various environmental regulations the resulting issuer is subject to; (xiv) risks related to regulatory and permitting delays; (xv) risks related to potential conflicts of interest; (xvi) the reliance on key personnel; (xvii) liquidity risks; (xviii) the risk of potential dilution through the issue of common shares; (xix) the Company does not anticipate declaring dividends in the near term; (xx) the risk of litigation; and (xxi) risk management. Forward-looking information is based on assumptions management believes to be reasonable at the time such statements are made, including but not limited to, continued exploration activities, no material adverse change in metal prices, exploration and development plans proceeding in accordance with plans and such plans achieving their stated expected outcomes, receipt of required regulatory approvals, and such other assumptions and factors as set out herein. Although the Company has attempted to identify important factors that could cause actual results to differ materially from those contained in the forward-looking information, there may be other factors that cause results not to be as anticipated, estimated or intended. There can be no assurance that such forward-looking information will prove to be accurate, as actual results and future events could differ materially from those anticipated in such forward-looking information. Such forward-looking information has been provided for the purpose of assisting investors in understanding the Company’s business, operations and exploration plans and may not be appropriate for other purposes. Accordingly, readers should not place undue reliance on forward-looking information. Forward-looking information is made as of the date of this presentation and the Company does not undertake to update such forward-looking information except in accordance with applicable securities laws.

Qualified Person: The included scientific and technical information regarding exploration activities as defined in NI 43-101 s. 1.1, was either prepared, reviewed and/or approved by Marc-André Bernier géo. (QC), P.Geo., (ON), M.Sc., Technical adviser for Focus Graphite Inc. and a Qualified Person under National Instrument (NI) 43-101 guidelines.

All measurements provided in this presentation are in metric units. All monetary amounts are expressed in Canadian dollars unless otherwise indicated.

Advanced Materials

We develop advanced materials to secure supply chains, cut foreign reliance, and fuel clean energy growth.



Why Invest?

Strategic Assets

- **Lac Knife** is North America's highest-grade natural flake graphite deposit (~15% Cg), Feasibility completed (2023), 27 year mine life.
- **Lac Tétépisca** is the largest contained in-situ graphite resource in the America's.

Near-Term Production

- Next in line for permitting in Québec's graphite pipeline.
- Among the lowest CAPEX projects in Canada, Feasibility stage, NPV \$500.9M, IRR 28.7%, 2.8 year payback.

Technology Advantage

- Patent-pending silicon-enhanced battery material for next-gen lithium-ion performance.
- Thermal purification without harmful chemicals - 99.95%+ achieved.

Government Aligned - Ready to Scale

- Off-take testing and qualification in process with strategic partners.
- Awarded \$14.1 million in funding by NRCan (Dec 2025) to develop an electro-thermal purification plant in Canada.

Critical Timing

- Congress is actively moving to reduce U.S. reliance on Chinese-made batteries (Decoupling from Foreign Adversarial Battery Dependence Act, Oct 2027)
- Defence, Aerospace and Battery sectors urgently seeking secure supply.

Experienced Team


- Deep operational experience and capital market expertise.
- Proven commercialization track record in high-tech, resource, and energy sectors.

Global Graphite Benchmark

Economic Success Driven by Grade, Strip Ratio & CAPEX

Jurisdiction	Average Deposit Grade (% Cg)	Strip Ratio
China	5%	4.0
North America	6.5%	4.5
Africa	7%	1.0
Lac Knife	14.97%	2.6

Strip Ratio	Range	Waste Level
Very Low	0 - 1.0	Minimal
Low	1.0 - 2.0	Highly efficient
Moderate	2.0 - 3.5	Optimal balance
Moderately High	3.5 - 5.0	Cost pressure
High	5.0+	Challenging

Company	Project (Feasibility)	CAPEX (CAD\$)	Market Cap (C\$M)
	Lac Knife	\$236M	\$44
	Matawinie	\$589M	\$888
	Phase 1	\$1.3B	\$396

Source: https://www.graphiteoneinc.com/wp-content/uploads/2025/04/NI-43101_FS_Report_20250422_Final.pdf, USD to CAD exchange 1.37
 Source: <https://nmg.com/wp-content/uploads/2025/11/2025-Feasibility-Study-for-the-Matawinie-Mine.pdf>, USD to CAD exchange 1.40

Lac Knife combines a relatively low strip ratio with **industry leading grade**, delivering superior mining and processing while positioning it as a competitive allied alternative to Chinese graphite supply.

Graphite

Powering a Secure and Sustainable North American Supply Chain

Graphite is a critical material for green technology, serving as a key component in lithium-ion batteries for **electric vehicles**, **renewable energy storage**, and **fuel cells**.

Its high conductivity, thermal stability, and lightweight properties also make it indispensable for **military applications**, including advanced weaponry, stealth technology, and aerospace systems.



*"Our cells should be called Nickel-**Graphite**, because primarily the cathode is nickel and the anode side is **graphite** with silicon oxide..." - **Elon Musk, CEO, Tesla***

The Critical Importance of Graphite

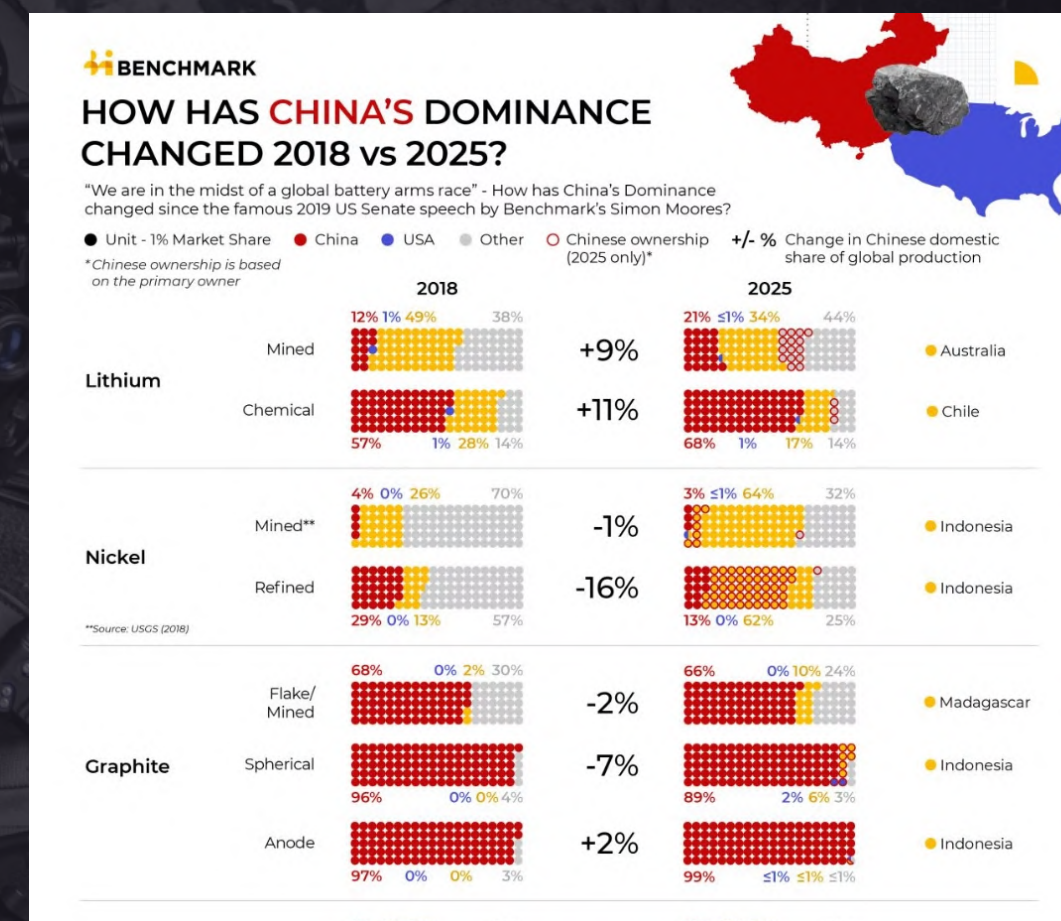
The importance of graphite in today's world cannot be overstated.

It is classified as a **critical mineral** due to its essential role in industrial and defence applications, as well as concerns over **supply chain security**.

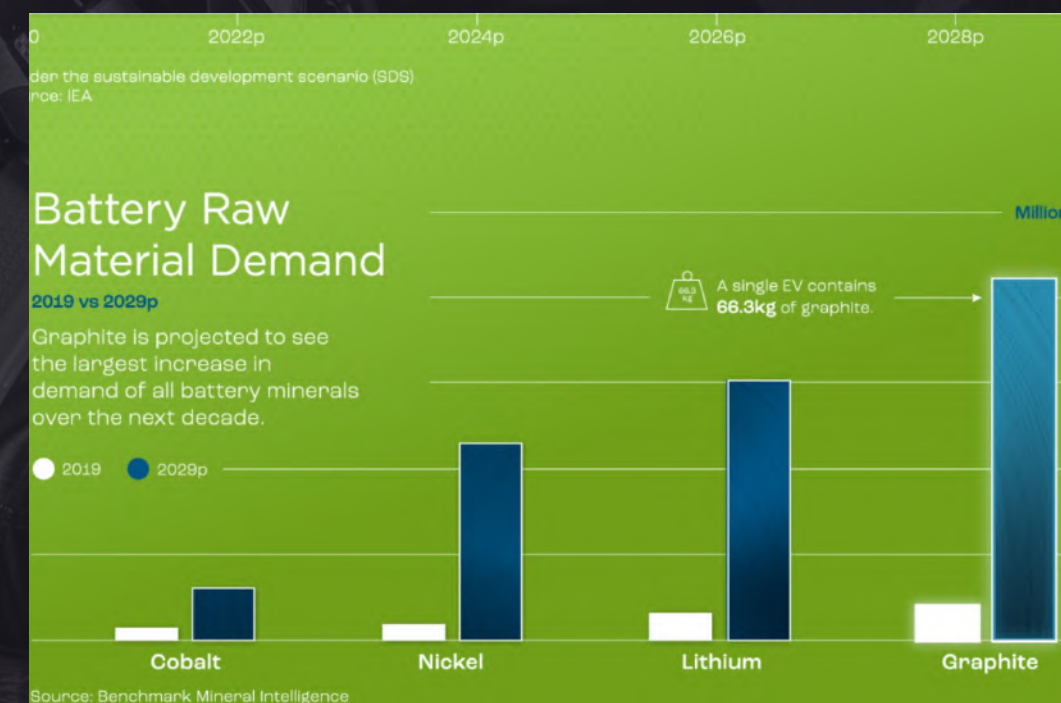
Industrial Use: Graphite is a key material in lithium ion-batteries, steel production, lubricants, and advanced manufacturing, including semiconductors and fuel cells.

Defence Applications: It is vital for military energy storage, radar suppression, missile technology, aerospace components, and heat-resistant materials used in defence systems.

Supply Risk: The global graphite supply chain is heavily concentrated, with China dominating both raw material extraction and battery grade-refining, creating vulnerabilities in North American and global supply chains.



Source: Benchmark Minerals



Source: <https://www.benchmarkminerals.com/natural-graphite>

Why is Graphite Critical?



Essential for Energy Transition

Graphite is a key component in lithium-ion batteries, powering electric vehicles, renewable energy storage, and consumer electronics.



Critical for Industrial Applications

Used in steel production, lubricants, and high-performance materials for manufacturing electronics. Limited diversification of global graphite sources put countries at risk of supply disruptions during geopolitical tensions.



National Security & Defence

Vital for military energy storage, aerospace technologies, and missile systems. China dominates both the mining and processing of graphite, creating significant supply chain vulnerabilities.



Demand is Surging

Benchmark Minerals estimates meeting global battery demand by 2030 would require **31** new Natural Graphite mines. Graphite forecast to dominate mineral demand to 2050.

A Military Defence Solution

NATO identified 12 defence-critical raw materials essential for Allied defence. The materials are integral to the manufacture of advanced defence systems and equipment.

Graphite is listed as VERY HIGH RISK.

China is by far the largest producer of natural graphite, accounting for roughly two-thirds of world production.

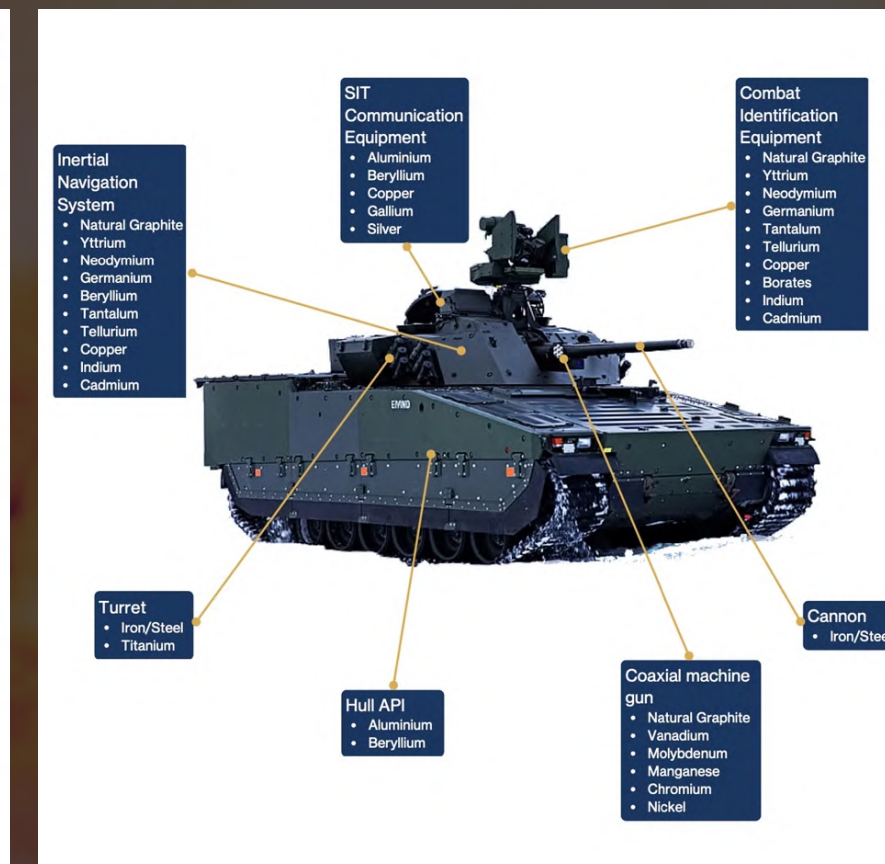
Only ~4% of the world's natural graphite comes from North America, with no U.S. production in decades.

October 2023 - China announced a set of export restrictions on certain graphite products.

Supply risk for critical raw materials in military applications



Source: Strategic raw materials for defence Mapping European industry needs Benedetta Girardi, Irina Patrauh, Giovanni Cisco and Michel Rademaker The Hague Center for Strategic Studies, January 2023



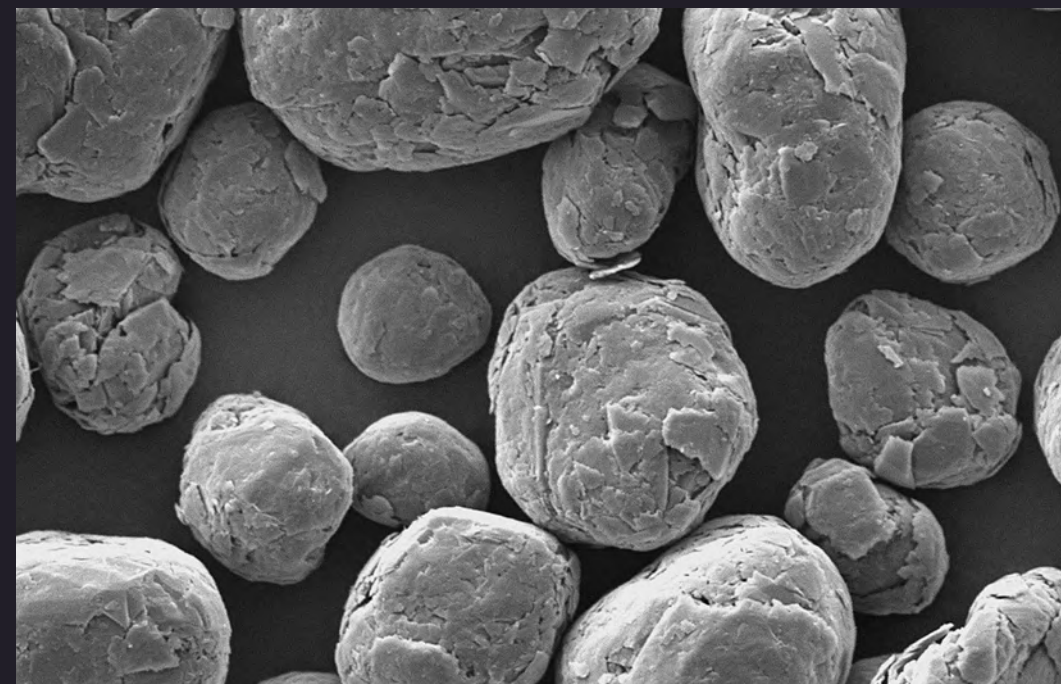
Company Focus

Focus Graphite delivers high-purity graphite through sustainable processing - powering the energy transition and next-gen defence, aerospace, and advance material technologies.



Graphite Mining

- Two 100% owned projects located in Québec, Canada - Lac Knife and Lac Tétépisca.
- Lac Knife graphite is among the highest quality material for high-end battery and military applications (Feasibility stage, NPV \$500.9M, IRR 28.7%)
- Lac Tétépisca MRE indicated 14.7 million tonnes total in-situ graphite



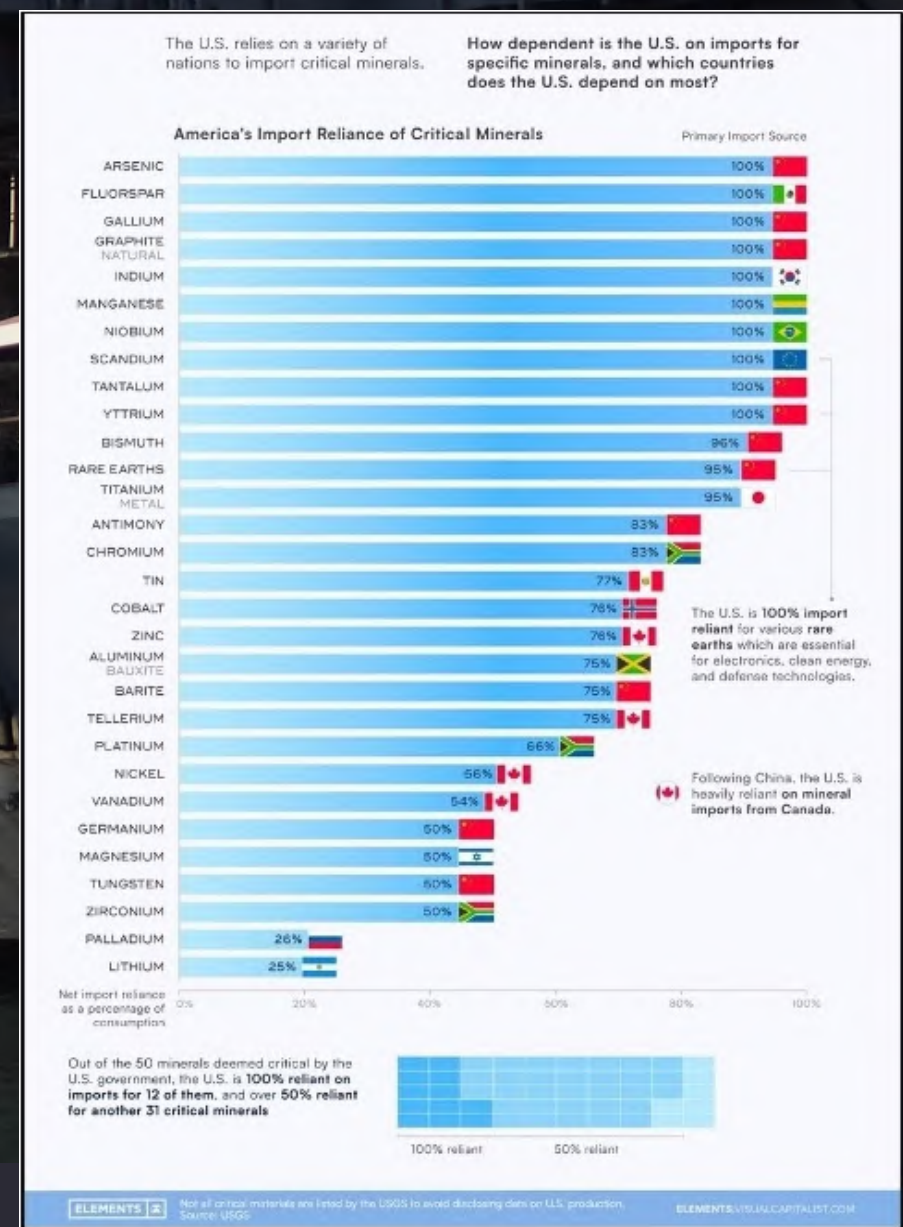
Technology Development

- Developing spheroidized graphite for next-gen batteries.
- Engineered to enhance lithium-ion battery performance.
- Initial coin cell tests have demonstrated significant improvements in energy capacity and power outputs.
- IP is graphite agnostic and scalable.
- IP Ontario Project (\$300k funding)



Sustainable Graphite Processing

- Focus is advancing the construction of Canada's first electro-thermal graphite purification system, a chemical free green process, backed by NRCan (C\$14.1 million).
- The technology has been proven to purify to battery grade anode material and higher (99.999%+).



America's Import Reliance of Graphite

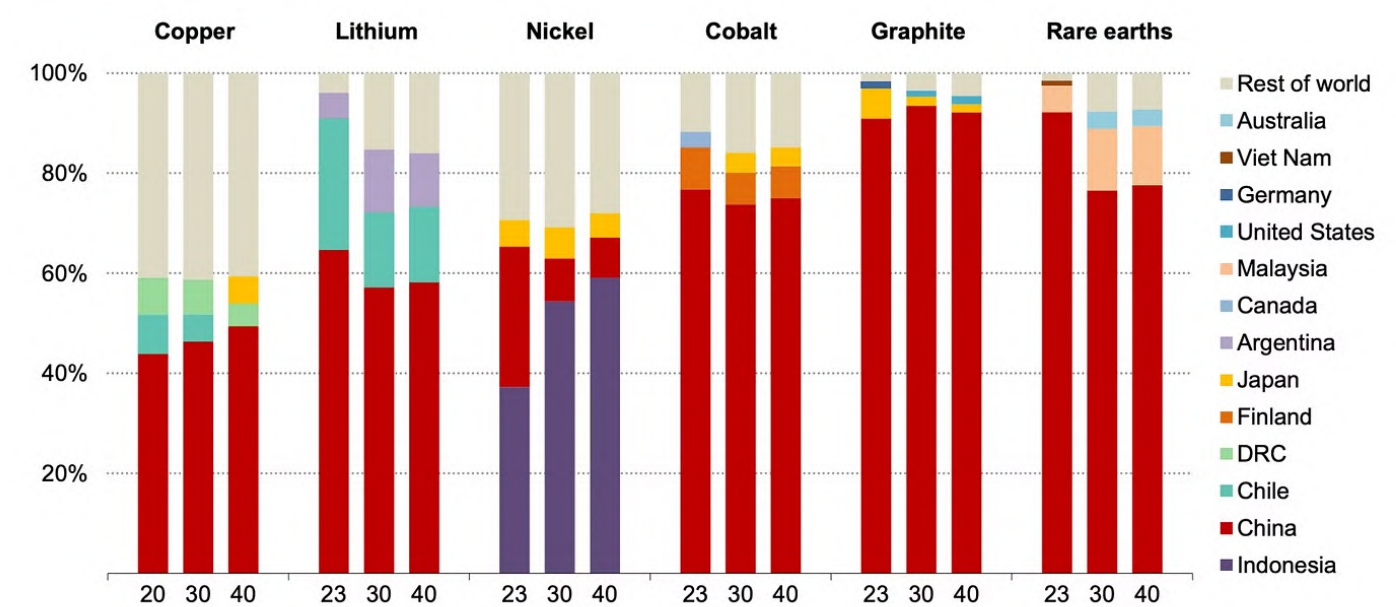


China accounts for 77% of natural graphite production, over 95% of synthetic graphite production, and nearly 100% of graphite refining.

The **United States** contains less than 1% of the world's graphite reserves and is **100% import reliant**.

Source: CSIS

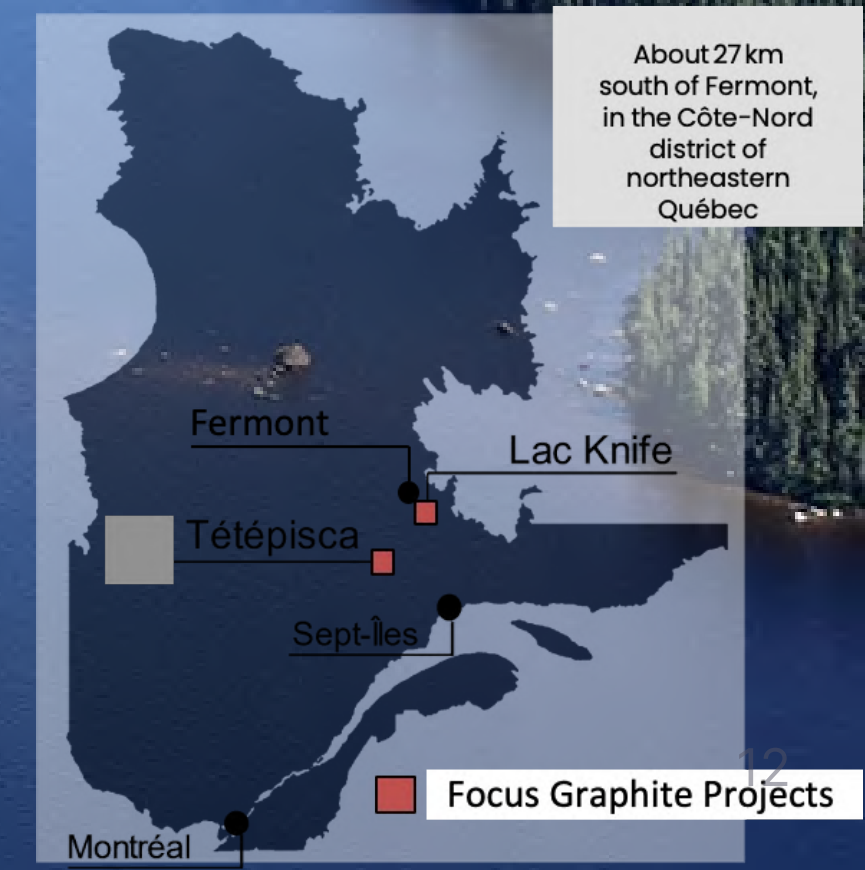
Geographical distribution of refined material production for key minerals



Notes: The figures for graphite are based on battery-grade spherical graphite and synthetic graphite supplies. The figures for rare earth elements are for magnet rare earth elements only. The figure depicts the value of the top three producing countries in a given year.
Source: IEA

Focus Graphite Projects

Two **High Purity** Flake Graphite Deposits
Québec, Canada



Lac Knife Graphite Project (Flagship)

High-Grade and Low-Strip Ratio

- **Located in a Top-Rated and Friendly Mining Jurisdiction**
 - Large established **multi billion-dollar iron-ore region**: Arcelor Mittal Mont Wright-Fire Lake mine, Rio Tinto's IOC's Carol Lake mine, Champion Iron's Bloom Lake mine and Tacora Resources Scully mine.
- **Excellent Infrastructure**
 - Approximately 27 km south of Fermont, in the Côte-Nord district in northeastern Québec.
 - Road accessible and access to low-cost hydroelectricity.
- **Large Resource Defined and 27 Year Mine Life**
 - 12 Mt Measured and Indicated, Graphitic Carbon (%) 15.34%, 1.7 Mt Concentrate.
 - 0.6 Mt Inferred, Graphitic Carbon 16.90%, 0.1 Mt Concentrate.
- **Exceptional Natural Flake Graphite Grades**
 - Amongst the top tier graphite deposits in the world in terms of quality and suitability for battery, military, and advanced material applications - **achieving 98.1% graphite concentrate from flotation alone.**
- **Strong Relations with the First Nations**
 - The graphite deposit is located within the traditional territory of the Innu First Nation of Pessamit in Québec.
 - Focus has engaged in consultation with Indigenous communities, recognizing their rights and interests.

Table 1.2 – Lac Knife – Mineral Resources (4% Cg Cut-Off Grade)

Category	Tonnes (Mt)	Graphitic Carbon (%)	Concentrate (Mt)
Measured ^{1,2,3}	-	-	-
Indicated ^{1,2,3}	12.0	15.34	1.7
Total Measured and Indicated	12.0	15.34	1.7
Inferred ^{1,2,3,4}	0.6	16.90	0.1

1. Mineral Resources are inclusive of Mineral Reserves.
2. The Mineral Resources were estimated following the Canadian Institute of Mining, Metallurgy and Petroleum (CIM), CIM Standards on Mineral Resources and Reserves, Definitions and Guidelines prepared by the CIM Standing Committee on Reserve Definitions and adopted by CIM Council.
3. Mineral Resources, which are not Mineral Reserves, do not have demonstrated economic viability. The estimate of Mineral Resources may be materially affected by environmental, permitting, legal, title, taxation, sociopolitical, marketing, or other relevant issues.
4. The Inferred Mineral Resource in this estimate has a lower level of confidence that that applied to an Indicated Mineral Resource and must not be converted to a Mineral Reserve. It is reasonably expected that the majority of the Inferred Mineral Resource could be upgraded to an Indicated Mineral Resource with continued exploration.
5. Resources are constrained by a Pseudoflow-optimised pit shell using HxGn MinePlan software. Pit shell is define using 45-degree slope, \$CAD 1,475/t concentrate sales price, \$CAD 5.91/t ore mining costs, \$CAD 34.42/t processing costs, \$CAD 10.53/t G&A and \$CAD 265.00/t for concentrate transportation costs, 90.7% process recovery, 97.8% concentrate grade and an assumed 50,000 tpy concentrate production.
6. The Effective Date is March 6, 2023.
7. Numbers may not add due to rounding.

Table 1.3 – Lac Knife Open Pit Mineral Reserves

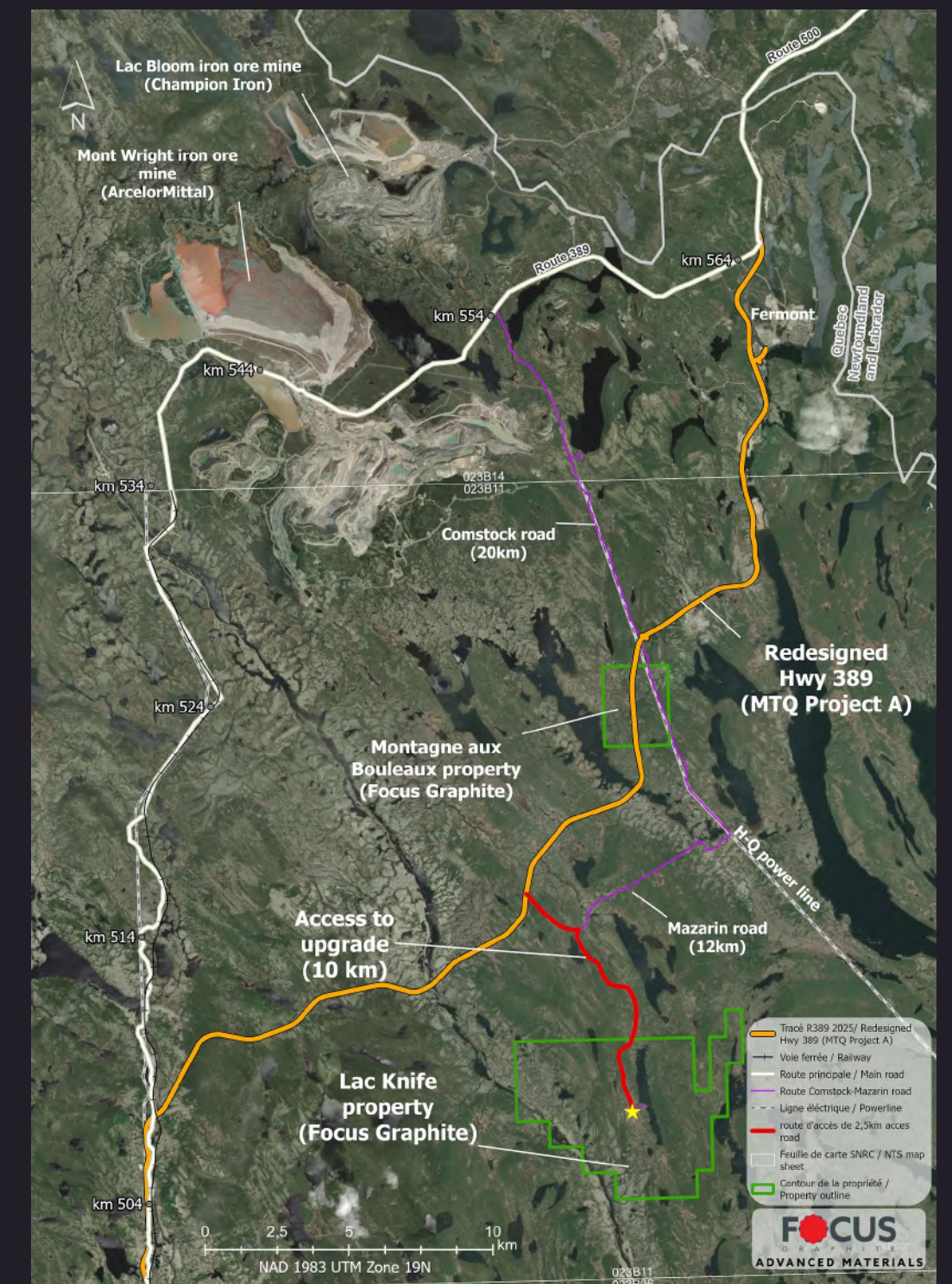
Category	Tonnage (kt)	Cg Grade (%)
Proven	-	-
Probable	9,310	14.97
Proven & Probable	9,310	14.97

Notes:

1. Estimate of Mineral Reserves has been estimated by the Reserves QP.
2. The Mineral Reserves are reported in accordance with the CIM Standards on Mineral Resources and Reserves, Definitions and Guidelines prepared by the CIM Standing Committee on Reserve Definitions and adopted by the CIM Council.
3. The effective date of the estimate is March 6, 2023.
4. Mineral Reserves are included in Mineral Resources.
5. Pit shell was developed using a 45-degree pit slope, concentrate sales price of \$1,375\$/t concentrate, mining costs of \$5.91 /t ore, \$5.40 \$/t waste, and 3.71\$/t overburden, processing costs of 34.42 \$/t processed, G&A cost of \$10.53 \$/t processed and transportation costs of 265 \$/t concentrate, 90.7% process recovery and 97.8% concentrate grade and an assumed 50,000 tpa concentrate production.
6. The Mineral Reserves are inclusive of mining dilution and ore loss.
7. The open pit Mineral Reserves are estimated using a cut-off grade of 5.1 % Cg.
8. The strip ratio for the open pits is 2.6 to 1.
9. The Mineral Reserves are stated as dry tonnes processed at the crusher.
10. All figures are in metric tonnes.
11. Totals may not add due to rounding.

Lac Knife Feasibility Study (2023)

Parameter	Details
Testing and Quality	Lac Knife graphite is among the highest quality for high-end battery and military applications, outperforming standard commercial grades.
Updated Feasibility Study (2023)	Positioned Lac Knife as one of the lowest-cost, highest-margin producers of high-purity graphite concentrate.
Mine Life	27 years
Pre-tax Financials	NPV: \$500.9M (8% DCF) IRR: 28.7% Capital Payback: 2.8 years
After-tax Financials	NPV: \$285.7M (8% DCF) IRR: 22.4% Capital Payback: 3.3 years
Initial Capital Expenditure (CAPEX)	C \$236.5M
Annual Operating Expenses (OPEX)	C \$25.9M
Average Sales Price	US \$1,679 per tonne of graphite concentrate
Production Capacity	Flake Graphite Concentrate: 47,781 tonnes annually Mill Feed Rate: 365,320 tonnes of Mineral Reserves per year
Graphite Carbon Grade	99.7% Cg in +80 mesh flake concentrate
Economic Viability	Results confirm project viability with strong Base Case scenario.



DRA Americas Inc. et al., 2023. NI 43-101 Technical Report – Feasibility study update, Lac Knife graphite project, Québec, Canada; Available at www.sedarplus.ca/ under Focus Graphite Inc.

Lac Knife Graphite Project

Exceptional Graphite Concentrate **Quality**

High Grade Graphite

- The Lac Knife deposit boasts an **average grade of approximately 15% Cg** (graphitic carbon), with some zones reaching over **20% Cg** - **significantly higher than the global average.**

Superior Purity & Flake Size Distribution

- The deposit contains a high proportion of **large and jumbo flake graphite (33%)** (larger than +32 mesh, over 500 microns), which is in strong demand for **military and industrial applications.**
- Expandable Graphite:** For **flame retardant materials** in military ships, buildings, and protective barriers.
- Refractories and Crucibles:** High-temps linings for defence and aerospace manufacturing.
- Thermal Management:** Heat dissipation in missiles, avionics and satellites.
- Graphene Production:** Large flakes yield **high-quality graphene** for advanced materials.
- Nuclear Applications:** Large flakes can be upgraded for **high-purity** graphite needed in reactors.

Favourable Mineralization & Low Impurities

- Graphite mineralization is hosted in metamorphic rock, which enhances its crystallinity and conductivity - key factors for high-tech applications.
- Impurities reside predominantly on the outside of the flake making it easy to purify while maintaining the size and integrity of the flake.



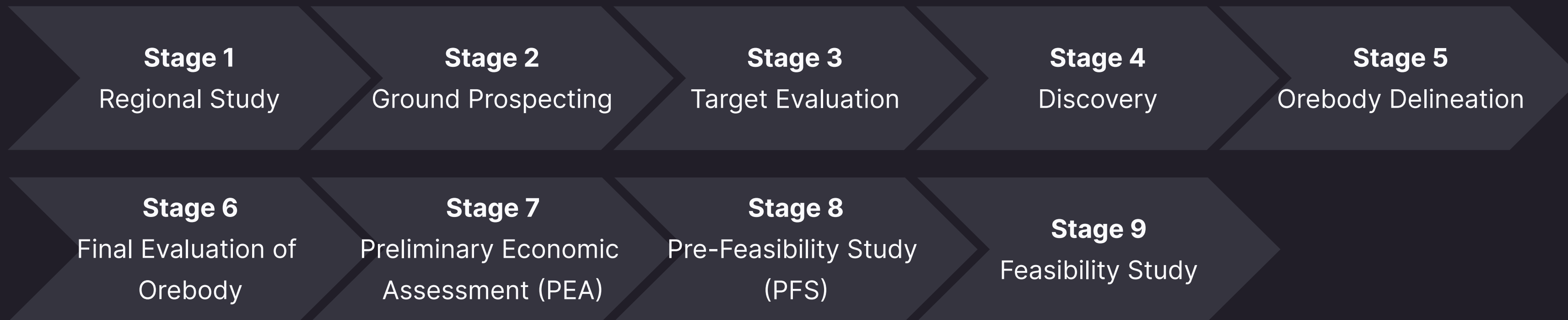
Particle Size Distribution	Weight (%)	Purity (% Ct)	Annual Tonnage	Average Price (\$US/t)
Mesh +48:	10	99.7	5,000	2,040
Mesh -48+80:	23	99.7	11,488	1,868
Mesh -80+150:	31.3	99.4	15,655	1,762
Mesh -150+400:	31.3	97	15,638	1,579
Mesh -400 (not included in weighted average):	4.4	86.8	2,219	
Weighted average:	100	98.2	47,781	1,679
Total recoverable product:	95.6	98.7	47,781	1,679

¹ Source : "NI 43-101 Technical Report – Feasibility study update, Lac Knife graphite project, Québec, Canada". Technical Report NI 43-101 prepared by DRA Global for Focus Graphite inc. Effective on March 6, 2023. Report available at: www.sedarplus.ca/ under Focus Graphite Inc.
* Selling price established by Benchmark Mineral Intelligence in 2022.

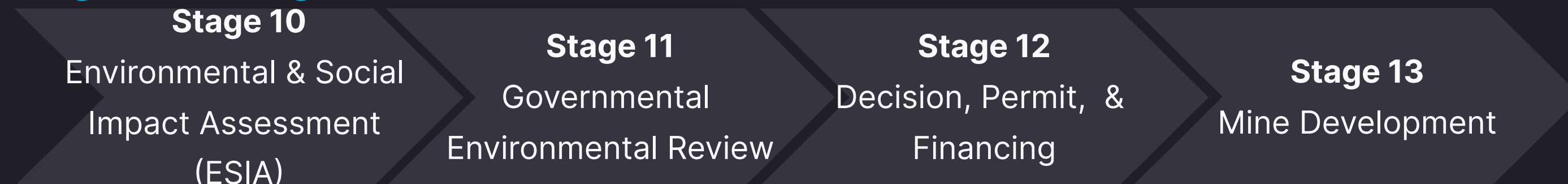
A Finish Line In Sight

Mineral Project Development Phases

Stages Completed



Stages On-Going



Historically it takes an average of **18 years** to open a mine in Canada

Focus Graphite is here and ~2 years away from being **Canada's next permitted mine**

Next Steps: Advancing the Lac Knife Project

Target: Complete and Submit the Updated ESIA report with appendices to the Québec Ministry (MELCCFP) by Q2-2026

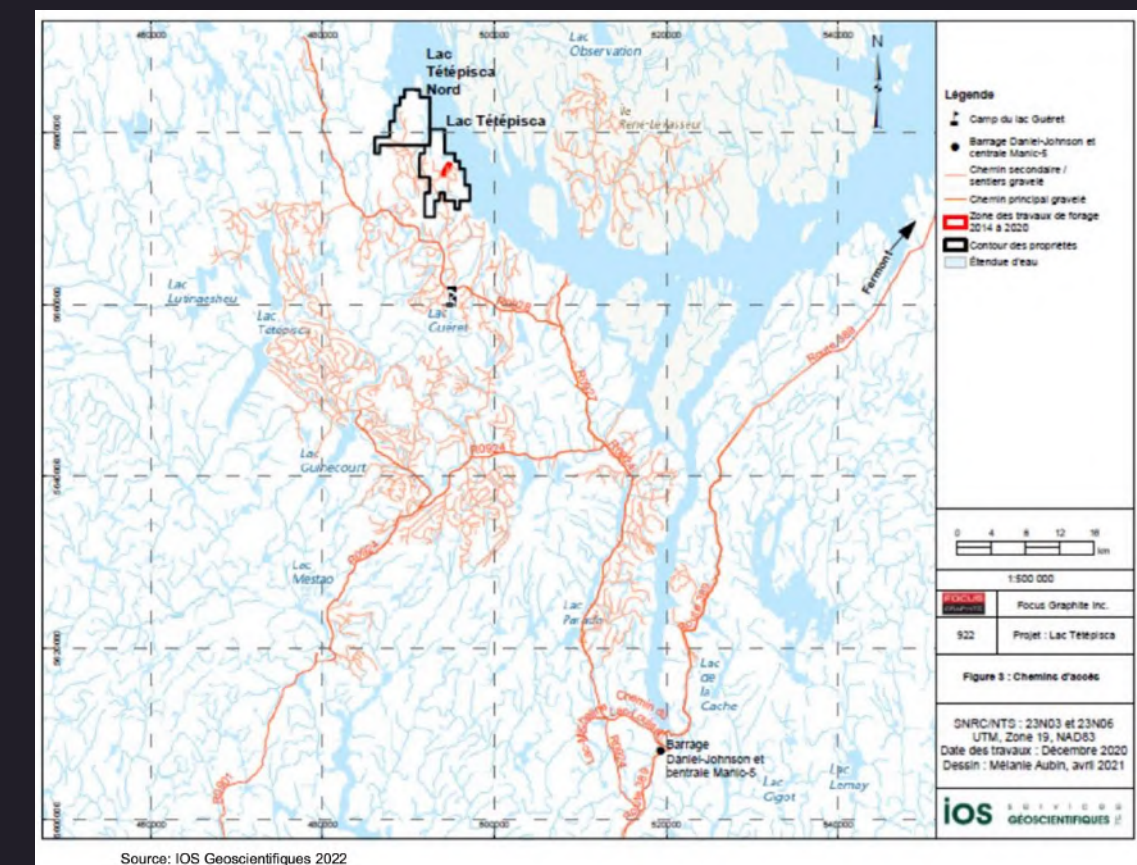
- New air quality model and dust management plan
- New hydrogeochemical model
- Design of wastewater filtration, treatment, & runoff systems
- Noise & vibration study aligned with feasibility results
- Tailings dam failure assessment based on updated Feasibility Study
- Ongoing community engagement with First Nations & community stakeholders
- Strengthening ESG compliance, optimizing project design, and ensuring long-term sustainability

The Lac Knife Project is supported by [Natural Resources Canada \(NRCan\)](#)

Tétépisca Graphite Project

One of the **largest graphite deposits Globally**
MRE Upgrade Announced May 2026

- **Located in a Top-Rated and Friendly Mining Jurisdiction**
 - Located in the Côte-Nord administrative region of Québec.
 - 234 km north-northwest of Baie-Comeau, an industrial city.
 - 125 claims with a total area of over 6,737.5 hectares.
- **Road Accessible**
 - Access to the Project is via the paved all-weather Highway 389 (to km 212) and gravel logging roads.
- **Large High-Grade Resource Defined**
 - Indicated 120.1 (Mt), 10.27% Graphitic Carbon, 12.3 In-Situ Graphite (Mt).
 - Inferred 24.1 (Mt), 9.88% Graphitic Carbon, 2.3 In-Site Graphite (Mt).
- **A Generational Deposit**
 - Following the MRE Upgrade (May 2026), the outlined resource is considered a generational deposit in terms of size and resource grade



1 Source: DRA Americas Inc., 2022. NI 43-101 Technical Report - Mineral Resource Estimate - Lac Tétépisca Graphite Project, Québec; Available at www.sedarplus.ca/ under Focus Graphite Inc.

2 Source: Focus news release dated April 20, 2023; available on the Company's website at www.focusgraphite.com/.

3 Source: Focus news release dated August 1, 2023; available on the Company's website at www.focusgraphite.com/.

4 Source: Focus news release dated July 11, 2024; available on the Company's website at www.focusgraphite.com/.

5. Source: Focus news release dated May 7, 2026; available on the Company's website at www.focusgraphite.com

Next Steps: Advancing the Tétépisca Project

Pilot Plant Metallurgical Testing

- Processing mini bulk drill core composite samples
- Validating flow sheet for the Tétépisca concentrator
- Producing flake graphite concentrate for:
 - Purification trials
 - Independent testing by potential customers
 - Market and application confirmation

Preliminary Economical Assessment

- Focus expects to rapidly transition from MRE towards the completion of the PEA (anticipated 2027)

Strategic Impact: Optimizing processing, solidifying project economics, and advancing commercialization opportunities.

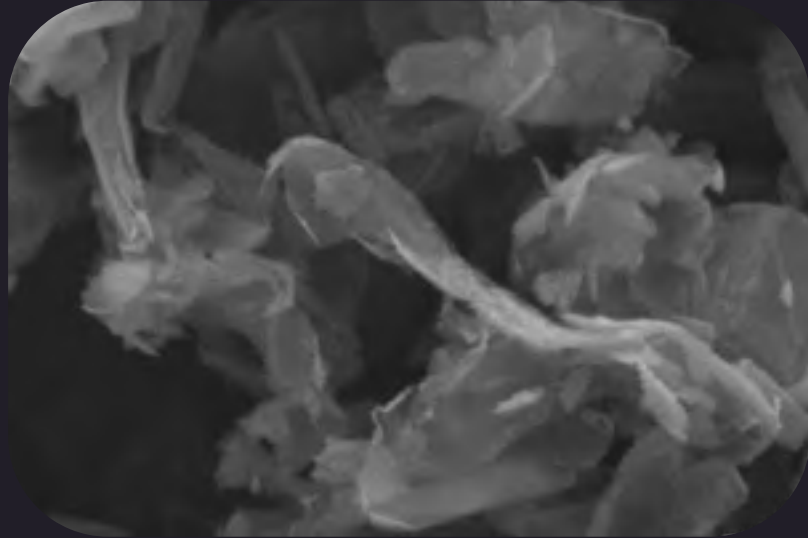


Focus Graphite Advanced Materials

Applications, Technology & Innovation



Advanced Carbon Materials



+50 Mesh (Coarse Flake) - Expanded

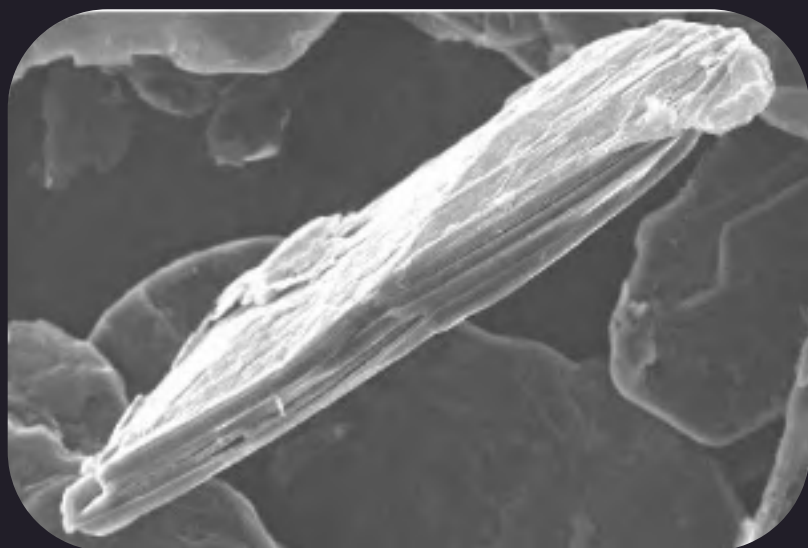
Size: Larger than 300 microns

Purity: Up to 99.7% Cg

Applications:

Expandable Graphite: High conductivity of electricity (battery), lubricants, fire suppressants, retardants, and foils used in heat management

- **Ductile Iron Components:** Gaskets, used in automotive manufacturing for internal combustion engines
- **Fuel Cells:** Gas diffusion layers for hydrogen fuel cells
- **Advanced Metallurgical Uses:** High-quality graphite for metallurgical furnaces and specialty alloys



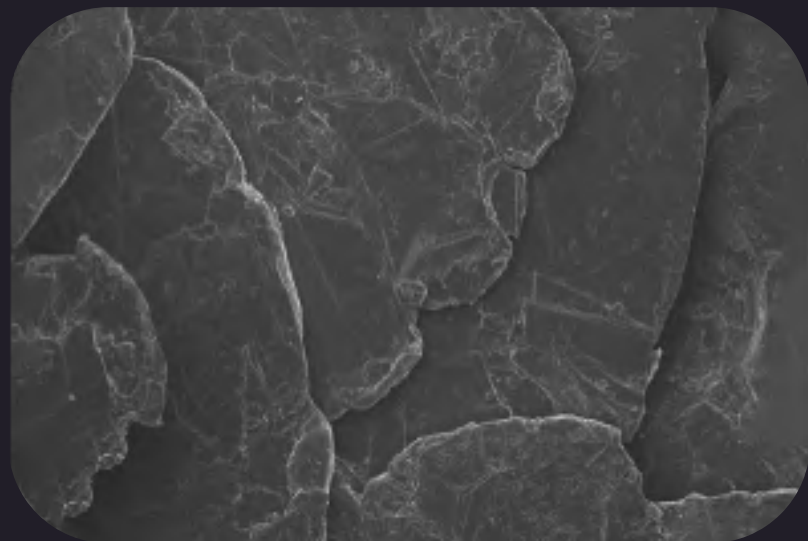
+80 to +100 Mesh (Medium Flake)

Size: 150 - 300 microns

Applications:

- **Synthetic Diamonds:** For cutting tools, drill bits, and ballistic armour
- **Graphite Electrodes:** Used in aluminum, steel, and magnesium smelting operations
- **Nuclear Applications:** When purified to 99.999% graphite becomes a critical material for nuclear reactors as a moderator in other high temperature applications.

Advanced Carbon Materials

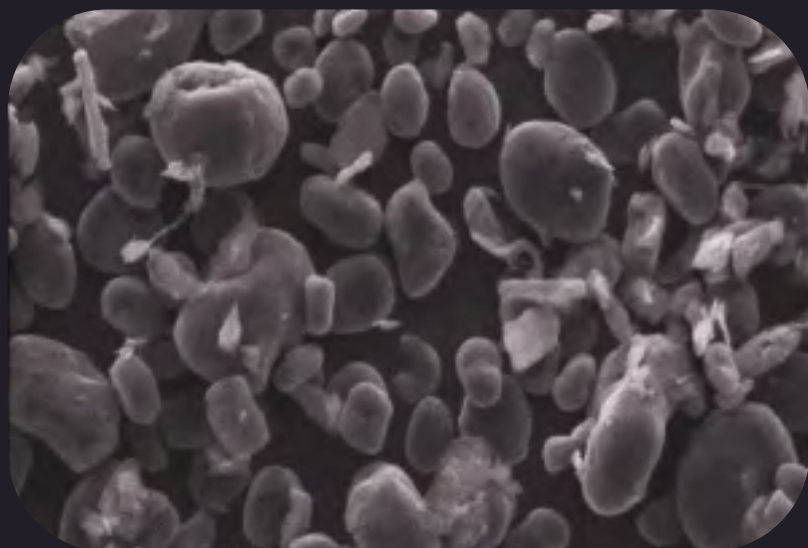


-100 to -400 Mesh (Fine and Superfine Flake)

Size: 38 - 150 microns

Applications:

- **Battery Materials:** Anode material for lithium ion, lead-acid, and metal-air batteries, as well as supercapacitators.
- **Stealth & Conductive Coatings:** Graphite-based coatings for radar signature suppression and icephobic surfaces
- **Recycled & Hybrid Graphite Solutions:** Integration with recycled graphite from spent lithium ion batteries, creating sustainable graphite solutions ideal for a circular battery supply chain
- **Anti-Corrosion Coatings:** Used in critical infrastructure for enhanced durability



Sub -400 Mesh (Ultra-Fine Flake)

Size: <38 microns

Applications:

- **Synthetic Diamond Precursors:** High-purity graphite for gemstone manufacturing and semiconductor tools (i.e. AI infrastructure)
- **Icephobic & Conductive Coatings:** Applied in aviation and infrastructure to prevent ice formation and ensure conductivity
- **Lithium Ion Batteries:** Key material for spherical graphite, enhancing battery performance in electric vehicle (EV's)
- **Additive to Steel Making Process:** Can be pelletized with iron ore

Carbon Stewards Through Advanced Green Technology

Focus Graphite is a leader in **advanced green technologies**, pioneering sustainable solutions from **mine to market**. Our proprietary technologies minimize environmental impact while enhancing efficiency, positioning us at the forefront of the graphite supply chain.

At the core of our innovation is the late **Dr. Joseph E. Doninger, MSc, BSc**, an internationally recognized graphite processing expert. With **six patents** and **29+ technical publications**, Dr. Doninger led our Technology Center, driving advancements in **graphite processing** and **energy storage solutions**.

Mining Technology

- **Flake Characterization Study**
 - In-ground analysis of flake size for improved mining efficiency and footprint
- **AI technology implementation**
 - Deposit characterization
 - Future drill targeting (as required)

Processing Technology

- **Non-Chemical Green Processing**
 - Utilizing fluidized thermal bed technology to reduce reliance on harmful chemicals
- Conditional funding of **\$14.1 million** awarded by Natural Resources Canada (NRCan) under the Global Partnership Initiative Stream

Final Materials Technology

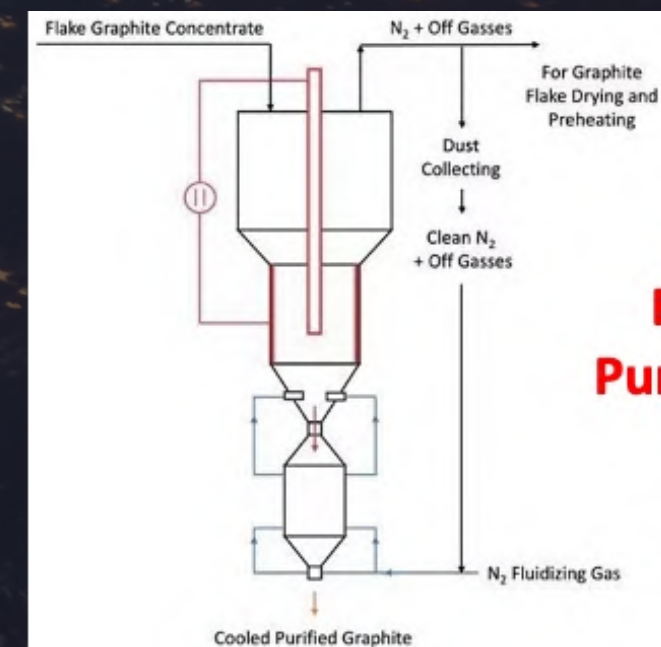
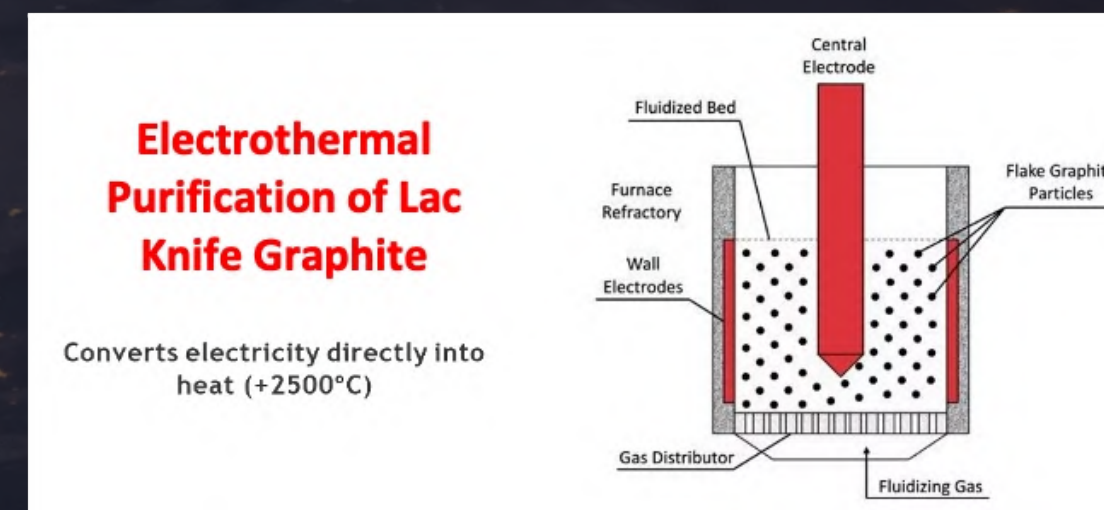
- **Silicon-Enhanced Spheroidized Graphite** for Anodes - enhancing battery output and performance through the creation of silicon enhanced spheres.
- Product Information Bulletin's are available upon request.

Processing Technology: Green Processing Lac Knife Graphite

Awarded **\$14.1m** in funding from **Natural Resources Canada** (NRCan) to Advance Canada's First Electro-thermal Fluidized Purification Demonstration Plant (December 2025)

- **Environmentally Friendly Technology:** This continuous process produces ultra-high purity graphite with zero liquid waste, lower emissions, and an ESG-aligned pathway to supply advanced battery, defence, aerospace, and clean technology markets.
- **Technology Advantage:**
 - Removes impurities without damaging flake structure, preserving jumbo flakes
 - Eliminates the use of hazardous Hydrofluoric and Hydrochloric Acid

Proven capable to purify to over Five Nine Purity (99.999%+) – considered **Nuclear** grade spec (<3 ppm boron)



**Simplified
Electrothermal
Purification Process
Flowsheet**

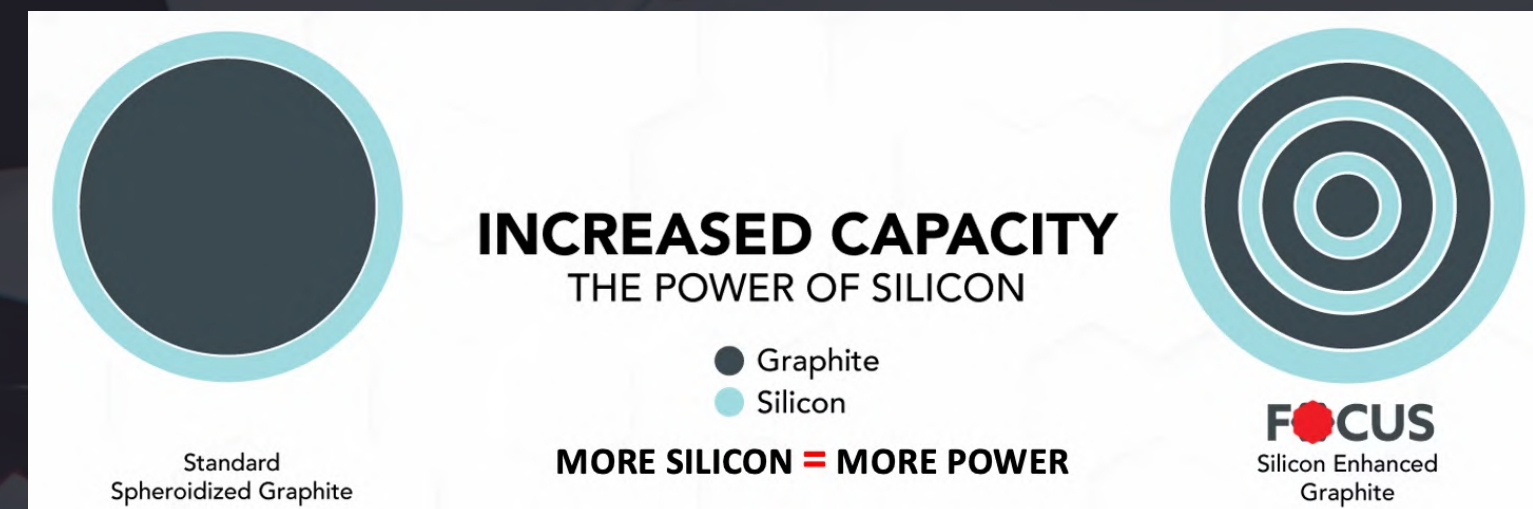
Next-Generation Silicon-Graphite Battery Technology

Silicon Enhanced Spheroidization of Graphite Particles

- Silicon offers **7-8x higher energy storage capacity** than graphite in lithium batteries.
- Our proprietary technology integrates silicon during spheroidization, enabling multiple silicon layers and significantly increasing silicon content.
- **Key Benefit: Higher energy density = longer battery life** (e.g., extended EV range).
- Successfully tested in coin cells, demonstrating enhanced performance.

Next Steps

- Scale testing in full-size batteries with third-party validation.
- Commercialization through licensing agreements.



Patent Pending



The technology is graphite-agnostic and adaptable to global feedstocks - enabling broad application potential

Comparison of Performance

Lac Knife Flake Graphite vs Synthetic Graphite in Lithium Ion Coin Cells

Batteries using Lac Knife material showed **minimal first-cycle capacity loss** compared to 3.5% and 6.5% losses with synthetic graphite.

Focus Graphite Coin Cell Test Sample	1 st Cycle Capacity	Irreversible 1 st Cycle Loss	Reversible Capacity (Ah/Kg)
Focus Li ion Fine Grade of Coated SPG D ₅₀ = 21.44 μ. Tap Density = 0.93 g/cc Surface Area = 0.44 m ² /g	366.0	0.65% (99.35% Efficient)	363.6
Commercial Li ion Synthetic Grade # 1 D ₅₀ = 15.8 μ. Tap Density = 0.88 g/cc Surface Area = 0.97 m ² /g	347.2	6.45% (93.55% Efficient)	324.8 (10.7% lower)
Commercial Li ion Synthetic Grade # 2 D ₅₀ = 20.6 μ. Tap Density = 0.87 g/cc Surface Area = 1.15 m ² /g	345.4	3.46% (96.54% Efficient)	333.4 (8.3% lower)



Focus Graphite is partnered with C4V for validation testing of Lac Knife Anode & Cathode Materials.

Performance data obtained during the program will contribute to Focus Graphite's global ranking within **C4V's Digital DNATM platform**, utilized by Gigafactories and OEM's worldwide.

September 15, 2025:

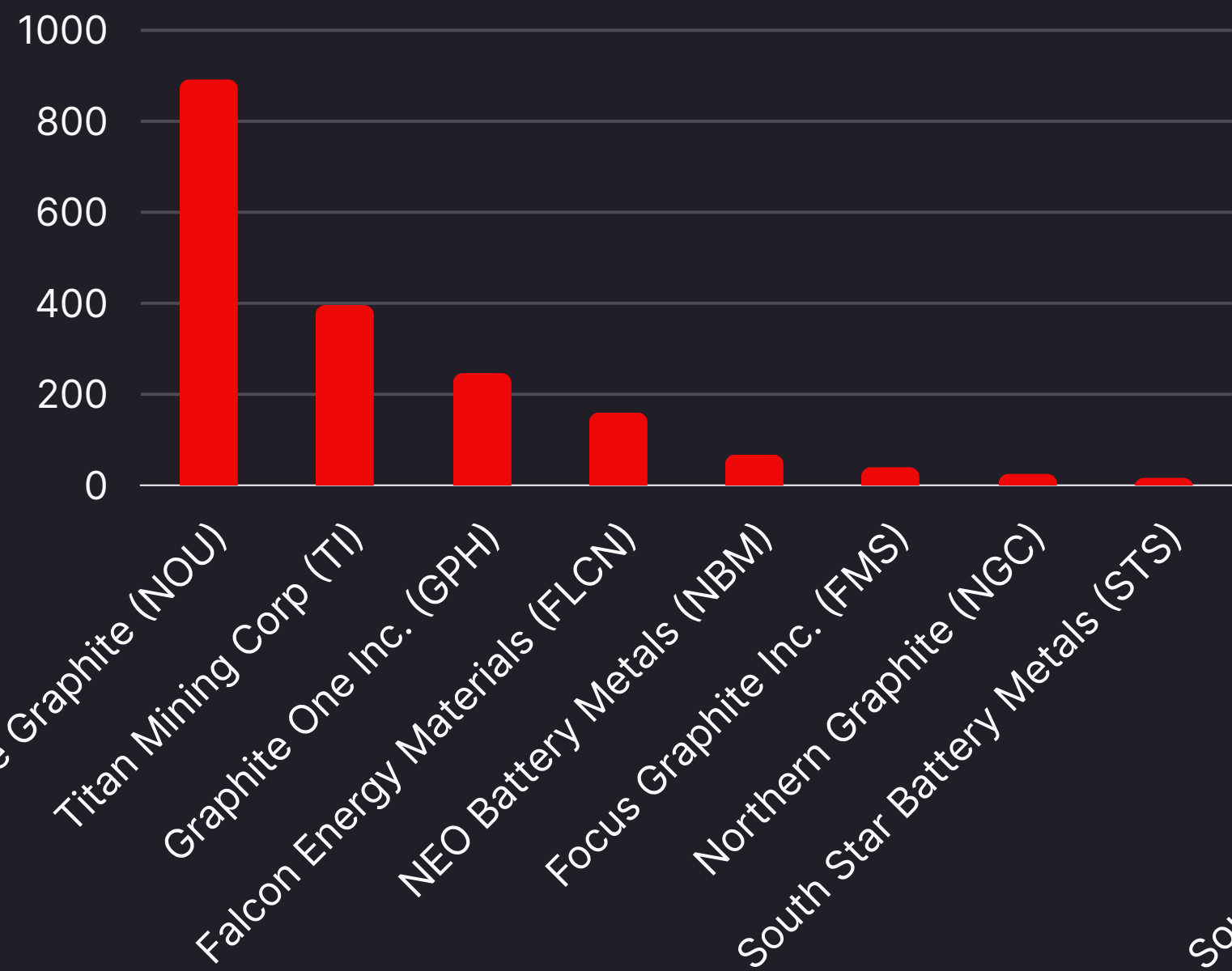
- Initial results demonstrate that spheroidization rejects from the Lac Knife deposit – typically considered waste – produced a **twenty-six percent (26%) increase in cathode electrode density** in single-side coated electrodes (2.39 g/cc vs. 1.76 g/cc baseline).

October 22, 2025:

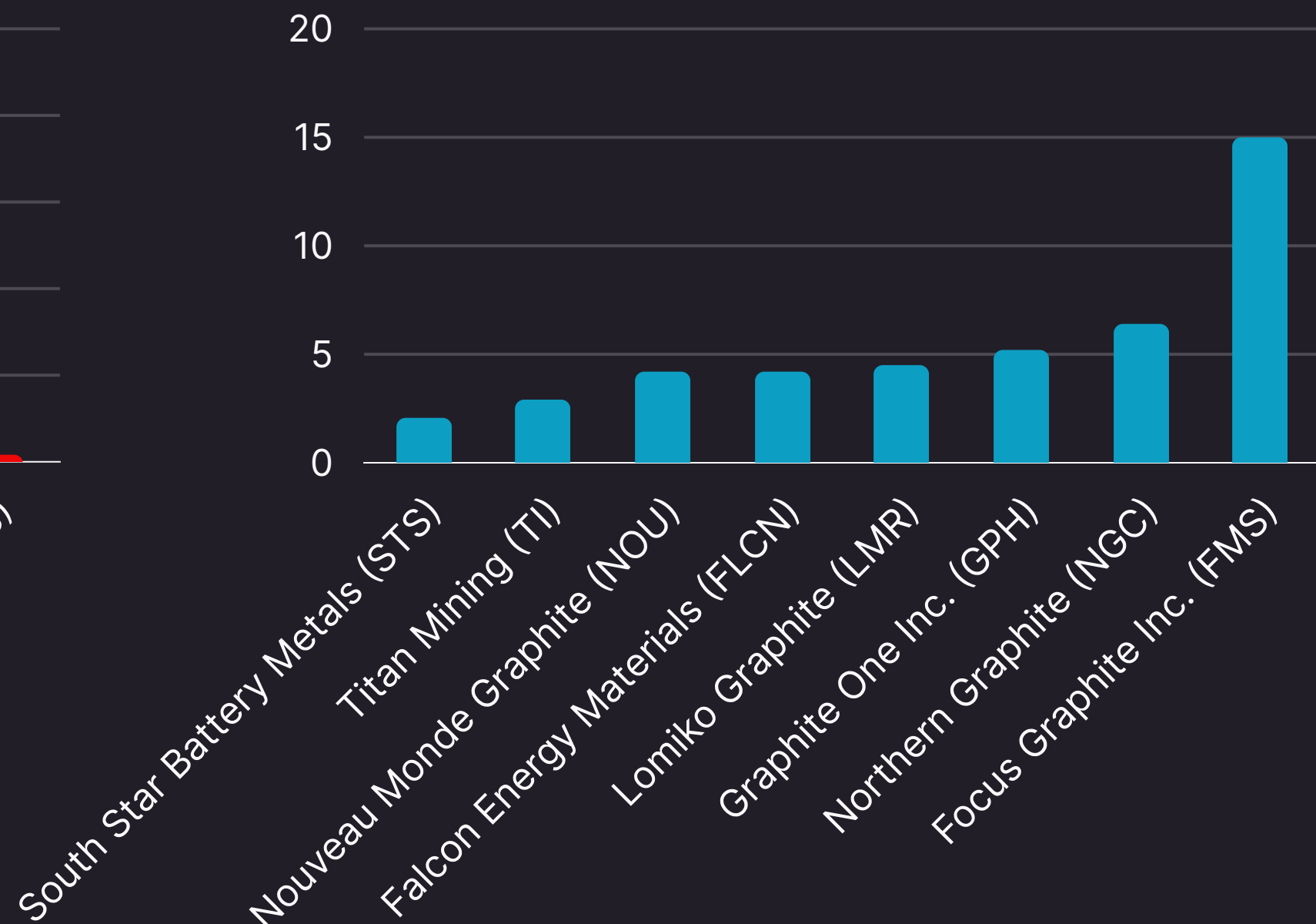
- Lac Knife graphite anode material has successfully passed **Phase I battery validation testing**, conducted by both Charge CCCV LLC (“C4V”) and American Energy Technologies Company (“AETC”) - Phase II pouch cell testing is underway.

Industry Market Capitalization & Average Grade Comparison

Market Capitalization (\$C in millions) (as of May 13, 2026)



Graphite Deposit Average Grade (% Cg)



Focus Graphite has the **highest-grade deposit** with a completed Feasibility Study - yet trades **well below** peers.

Summary of Next Steps

Lac Knife Project

- ❑ Complete ESIA
- ❑ Off-take agreements and partnerships
- ❑ Leverage grant opportunities
- ❑ Construction of electrothermal fluidized bed purification demonstration plant
- ❑ Community consultation
- ❑ Mine Permitting

Tétépisca Project

- ❑ Process ore through third-party pilot plant to determine flake size, purity, metallurgy and potential applications.
- ❑ Create COA on flake material for off take and partnerships
- ❑ Advance Preliminary Economical Assessment (PEA)

Mining & Battery Technology

- ❑ Continue with flake characterization technology to improve mining efficiency
- ❑ Test silicon enhanced battery technology with a third party in battery pouches to prove technology on larger batteries

Advanced Materials

- ❑ Process ore from Lac Knife and create a variety of advanced materials, which will be used as samples in our industry collaboration projects including military and next-generation energy applications

Board of Directors



Jeff York
Chairman

- CEO of Altea since 2024.
- Previous CEO of Farm Boy Inc., named one of Canada's best-managed companies in 2011.
- Served as President and CEO for 10 years at Giant Tiger Stores Ltd.
- Graduated from Princeton with an Economics Degree and holds a CFA designation.



Lindsay Weatherdon
Director

- CEO of Braille Energy Systems since 2018.
- President of Concord National Ontario and Quebec Divisions since 2002.
- Graduated from Algonquin College with a Business Administration and Management degree.



Dean Hanisch
Director

- Dean Hanisch is an entrepreneur with a successful 30-year record of assisting private and public companies in a broad range of industries.
- Experience at all stages of growth from seed to commercialization and monetization. Strategic in preparing and transitioning companies for a sale or divestiture.



Susan Rohac
Director

- 34+ years with the Business Development Bank of Canada (BDC), including Managing Partner, Climate Tech Fund (2017-2025).
- Oversaw \$1B+ in assets, including a fully deployed \$600M Fund I and \$500M Fund II.
- Recognized as a Clean 50 Climate Leader (2024) and Clean 16 award recipient.
- Holds undergraduate degrees in science and finance; Executive MBA, University of Ottawa.
- Governance designation (ICD.D), University of Toronto.

Management



Dean Hanisch
CEO

- Dean Hanisch is an entrepreneur with a successful 30-year record of assisting private and public companies in a broad range of industries.
- Experience at all stages of growth from seed to commercialization and monetization. Strategic in preparing and transitioning companies for a sale or divestiture.



Judith Mazihwa-Maclean
CFO

- Geologist and accountant with more than 16 years of experience in mining, management and corporate finance CFO with extensive experience in publicly traded companies.
- M.Sc. (Geology), MBA, CMA, CPA.



Jason Latkowcer
VP Corporate Development

- Accomplished executive with over 15+ years of experience in corporate and business development, capital markets, and strategic partnerships.
- Facilitated multiple transactions and strategic expansions, and has been directly involved in raising tens of millions in financing and grant funding.
- Graduated from the University of Ottawa (BA) and Quantic School of Business and Technology (EMBA).

Advisors



Richard Pearce, P.Eng
Graphite Specialist

- Licensed professional engineer, economist, and senior executive with more than 30+ years of experience.
- Founder and former CEO of South Star Battery Metals.
- Directed multidisciplinary teams on a large-scale mining and industrial projects with capital expenditures exceeding US\$1 Billion, spanning precious and base metals, industrial minerals and, fertilizers.



Sunho Kang, Ph.D
Battery Specialist

- 26-year lithium-ion battery expert with deep specialization in battery materials, cell engineering, and failure-mechanism analysis.
- Former CTO at Ionic Mineral Technologies & Ola Electric, leading large-scale battery R&D teams and delivering next-generation 4680 dry-electrode cells.
- Senior leadership roles at Volkswagen, Apple, Samsung SDI, and Wildcat, driving EV cell roadmaps, high-energy cell development, and global battery material sourcing.
- 30 U.S. patents & 87 publications, including pioneering work at Argonne National Laboratory and mentorship under Nobel Laureate Prof. John B. Goodenough.



Marc-André Bernier, P.Geo
Sr. Technical Consultant



- Mr. Bernier is the Senior Geoscientist at TJCM (Table jamésienne de Concentration Minière), a non-profit regional development organization founded in Chibougamau northern Quebec in 2001.
- TJCM provides on-demand technical support and advisory services to junior mining companies with exploration and mineral resources appraisal phase projects in Quebec.



General (Ret'd) Wayne Eyre
Defence & Security Expert

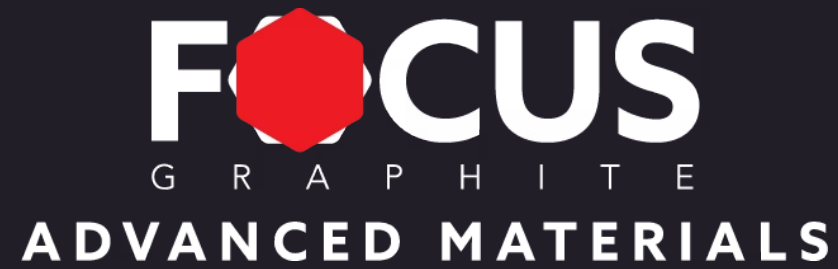
- Over 40 years of military service, including commanding on missions around the world
- Canada's most recent Chief of the Defence Staff - the commander of the Canadian Armed Forces and military advisor to the prime minister and cabinet
- As Deputy Commander United Nations Command - Korea - was Canada's most senior officer ever permanently stationed in the Asia Pacific region
- Bachelor of Science and three Masters degrees.

Capital Structure and Financial Information

Listed Exchange	TSX.V OTCQB FSE
Symbol	 FMS  FCSMF  FKCO
Market Capilization	\$43.30 M
Common Shares Outstanding	110,516,729
Warrants	29,572,021
Options	12,163,322
Restricted Share Units	1,350,000
Fully Diluted	153,602,072
Cash**	~\$1,100,000
Share Price	\$0.40
52-Week Range	\$0.07-0.69

*Cap Table as of May 13, 2026

**~\$1.5M pending GPI grant receivable (submitted & paid quarterly)



Contact us for partnerships, offtake agreements, or project collaboration

 TSX.V: FMS

 OTCQB: FCSMF

 FSE: FKCO

Phone

(613) 612-6060

Email

info@focusgraphite.com

