



FOCUS

GRAPHITE

Developing High-Grade Flake Graphite Projects to Supply Top Quality Battery-Grade Graphite for the Green Energy Revolution

Presentation to Shareholders – September 2024

TSX.V: FMS | OTCQX: FCSMF | FSE: FKC | www.focusgraphite.com

- Introduction
- About Focus Graphite
- Our flagship project: Lac Knife
- Recent discovery with upside potential: Lac Tétépisca
- Question and answer
- Conclusions and wrap up

Have a question?

You can put your hand up using the Zoom react button to raise hand, and we will call on you in order. Remember to take yourself off mute.

You can also type it in the chat box, so we can relay it to the group.

If we run out of time, please email your question to info@focusgraphite.com, and we will respond by end of day Monday.

This presentation contains “forward-looking information” within the meaning of Canadian securities legislation. All information contained herein that is not clearly historical in nature may constitute forward-looking information. Generally, such forward-looking information can be identified by the use of forward-looking terminology such as “plans”, “expects” or “does not expect”, “is expected”, “budget”, “scheduled”, “estimates”, “forecasts”, “intends”, “anticipates” or “does not anticipate”, or “believes”, or variations of such words and phrases or state that certain actions, events or results “may”, “could”, “would”, “might” or “will be taken”, “occur” or “be achieved”. Forward-looking information is subject to known and unknown risks, uncertainties and other factors that may cause the actual results, level of activity, performance or achievements of the Company to be materially different from those expressed or implied by such forward-looking information, including but not limited to: (i) risks relating to widespread epidemics or pandemic outbreak including the COVID-19 pandemic; the impact of COVID-19 on our workforce, consultants, suppliers and other essential resources and what effect those impacts, if they occur, would have on our business; (ii) volatile stock price; (iii) the general global markets and economic conditions; (iv) the possibility of write-downs and impairments; (v) the risk associated with exploration, development and operations of mineral deposits; (vi) the risk associated with establishing title to mineral properties and assets; (vii) the risks associated with entering into joint ventures; (viii) fluctuations in commodity prices; (ix) the risks associated with uninsurable risks arising during the course of exploration, development and production; (x) competition faced by the resulting issuer in securing experienced personnel and financing; (xi) access to adequate infrastructure to support mining, processing, development and exploration activities; (xii) the risks associated with changes in the mining regulatory regime governing the resulting issuer; (xiii) the risks associated with the various environmental regulations the resulting issuer is subject to; (xiv) risks related to regulatory and permitting delays; (xv) risks related to potential conflicts of interest; (xvi) the reliance on key personnel; (xvii) liquidity risks; (xviii) the risk of potential dilution through the issue of common shares; (xix) the Company does not anticipate declaring dividends in the near term; (xx) the risk of litigation; and (xxi) risk management. Forward-looking information is based on assumptions management believes to be reasonable at the time such statements are made, including but not limited to, continued exploration activities, no material adverse change in metal prices, exploration and development plans proceeding in accordance with plans and such plans achieving their stated expected outcomes, receipt of required regulatory approvals, and such other assumptions and factors as set out herein. Although the Company has attempted to identify important factors that could cause actual results to differ materially from those contained in the forward-looking information, there may be other factors that cause results not to be as anticipated, estimated or intended. There can be no assurance that such forward-looking information will prove to be accurate, as actual results and future events could differ materially from those anticipated in such forward-looking information. Such forward-looking information has been provided for the purpose of assisting investors in understanding the Company’s business, operations and exploration plans and may not be appropriate for other purposes. Accordingly, readers should not place undue reliance on forward-looking information. Forward-looking information is made as of the date of this presentation and the Company does not undertake to update such forward-looking information except in accordance with applicable securities laws.

Qualified Person: The included scientific and technical information regarding exploration activities as defined in NI 43-101 s.1.1, was either prepared, reviewed and/or approved by Marc-André Bernier géo. (QC), P.Geo., (ON), M.Sc., Technical adviser for Focus Graphite Inc. and a Qualified Person under National Instrument (NI) 43-101 guidelines.

All measurements provided in this presentation are in metric units. All monetary amounts are expressed in Canadian dollars unless otherwise indicated.





Marc Roy
President and CEO
Focus Graphite



Kimberly Darlington
Communications
Focus Graphite



Judith Mazvihwa-Maclean
CFO
Focus Graphite



Marc-André Bernier, géo.
Table Jamésienne de
Concertation Minière
(TJCM) - Senior technical
consultant



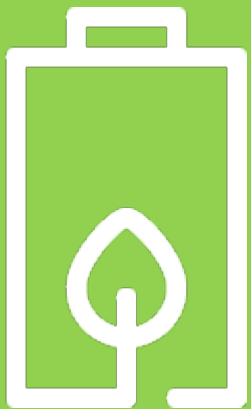
Réjean Girard, géo.
President of IOS Services
Géoscientifiques inc. -
Technical consultant

Listed exchange	TSX Venture
Symbol	FMS
Market capitalization	\$5.934M
Common shares outstanding	62,464,170
Warrants	1,685,061
Options	8,440,000
Fully diluted	72,589,231
Cash and investments	\$250K
Share price (at September 16, 2024)	\$0.095
52-week range	\$0.09 – \$0.30

The case for graphite

The world is poised at the cusp of a **green energy revolution**, where renewable energy sources are replacing traditional sources of energy, such as oil, coal, and gas. One of the major shifts taking place is the replacement of vehicles that run on fuel to zero-emission electric vehicles (EVs).

These EVs require powerful batteries that are made of critical materials that include lithium, cobalt, nickel, manganese, and **graphite**.



Graphite makes up more than half of the battery's components, and for EV batteries to be sufficiently powerful to run vehicles, the graphite used for the battery's anode has to be high-quality, with a highly crystalline structure.

We believe that:

- We all must adopt **renewable, sustainable energy solutions** to preserve our planet.
- Mining and processing the minerals that are critical to the production of green energy solutions **can be achieved in a responsible way** that protects the environment and makes use of sources of clean energy.
- People — be they our employees, clients, or members of the communities where we operate — are the most important factor in our success. **We are open and honest with all our stakeholders.**

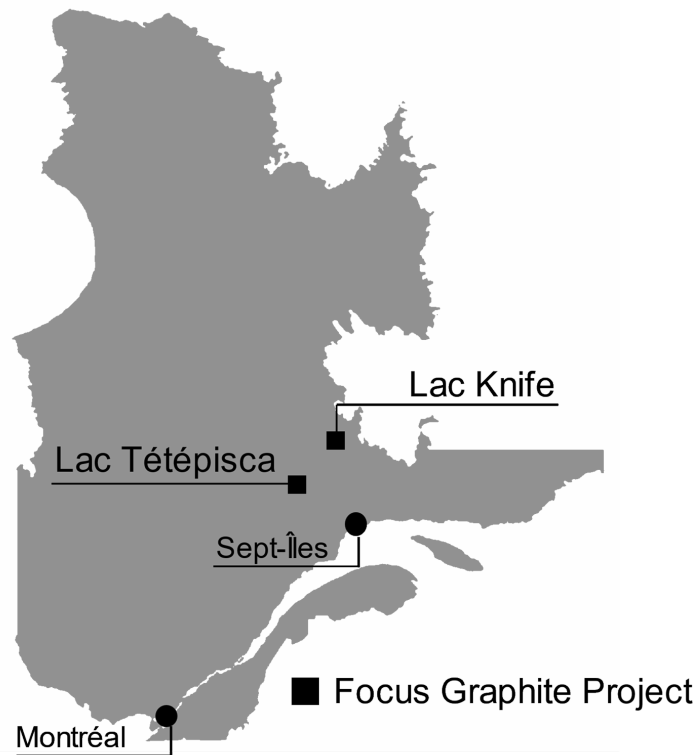
We seek to play a key role in supplying the raw materials needed for today's green energy revolution.

More than two-thirds of the battery-grade graphite available today comes from China, and there are **no graphite mines in operation in the United States**. North America needs a secure source of high purity large-flake graphite.

Focus Graphite plans to be that source.

Focus Graphite is developing some of the highest quality flake graphite properties in the world

- Located in Québec, Canada, a top-rated mining jurisdiction
- Infrastructure such as roads and low-cost hydroelectricity that make remote mine sites easier and cheaper to access and operate
- Government's \$90 million plan for the development of critical and strategic minerals (CSM) 2020-2025 to encourage the production of materials needed for renewable energy
- A financial assistance program for exploration projects for critical and strategic materials, such as graphite





The U.S. Defense Production Act (DPA) is looking to encourage the development of domestic sources of critical minerals for the Department of Defense (DoD) and other American offtakers and manufacturers.

- The program has a US\$750 million fund that can be accessed to encourage the development of a domestic supply chain for these minerals
- Applications are accepted as *white papers* (proposals) from “domestic” companies (Canada has been considered “domestic” since 1985) that are looking for funding to support the development of such supply chains.
- DoD is shedding legacy batteries in favor of lithium-ion batteries, with applications ranging from dismantled soldier communications to *missiles, munitions, and reconnaissance equipment*
- Focus Graphite plans to pursue this opportunity, along with those offered by the Québec and Canadian governments

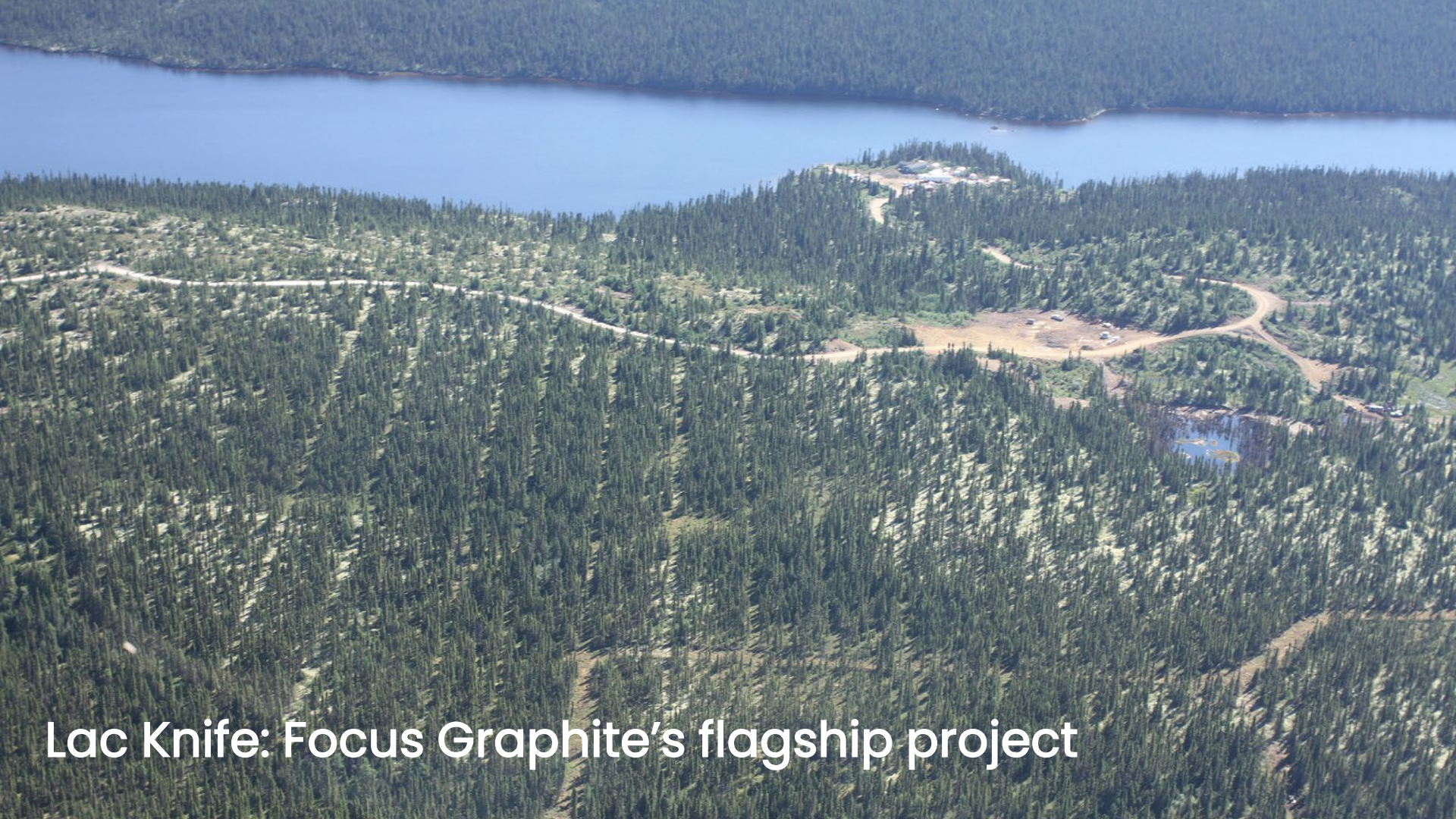


Vision

The Canadian **Critical Minerals** Strategy will increase the supply of responsibly sourced critical minerals and support the **development** of domestic and global **value chains** for the **green** and digital economy.

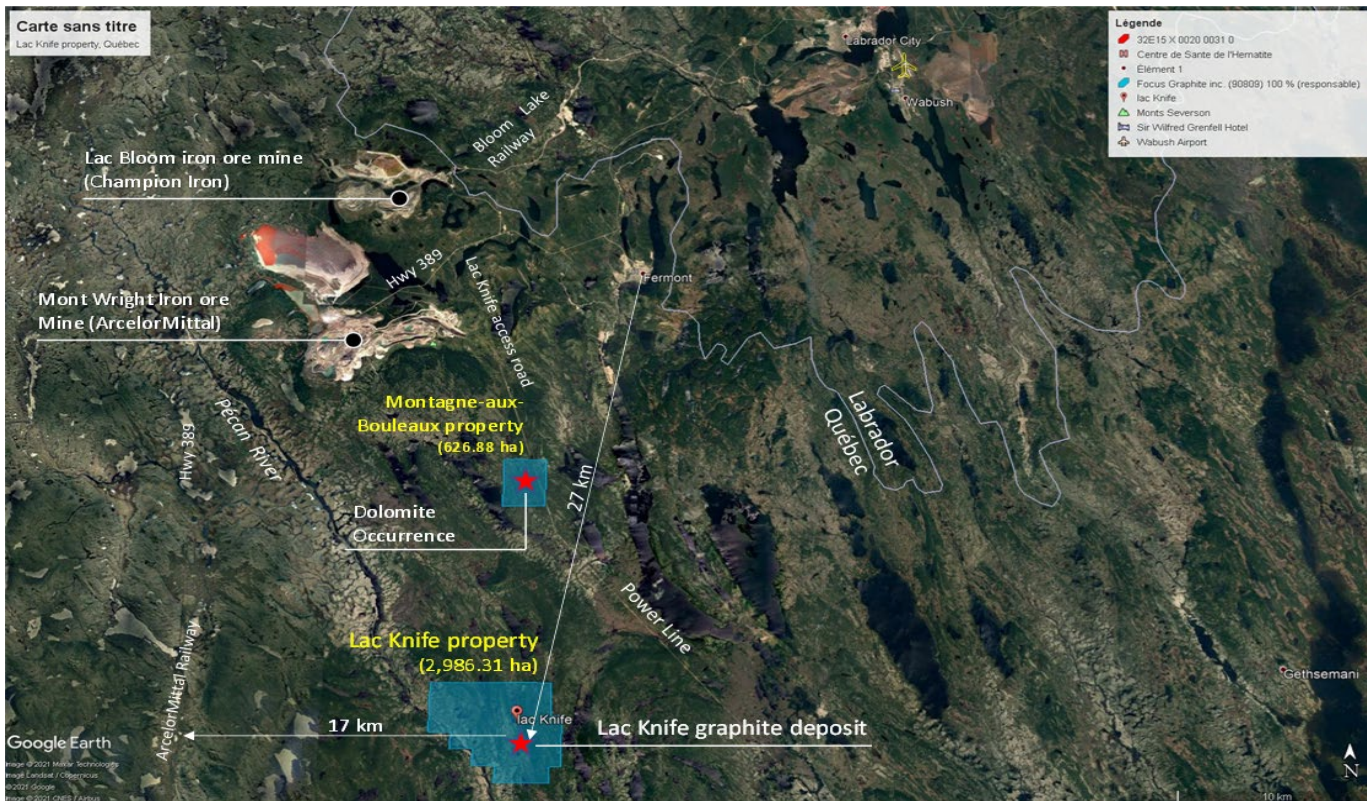
Objectives

1. Supporting economic growth, competitiveness, and job creation
2. Promoting climate action and environmental protection
3. Advancing reconciliation with Indigenous peoples
4. Fostering diverse and inclusive workforces and communities
5. Enhancing global security and partnerships with allies



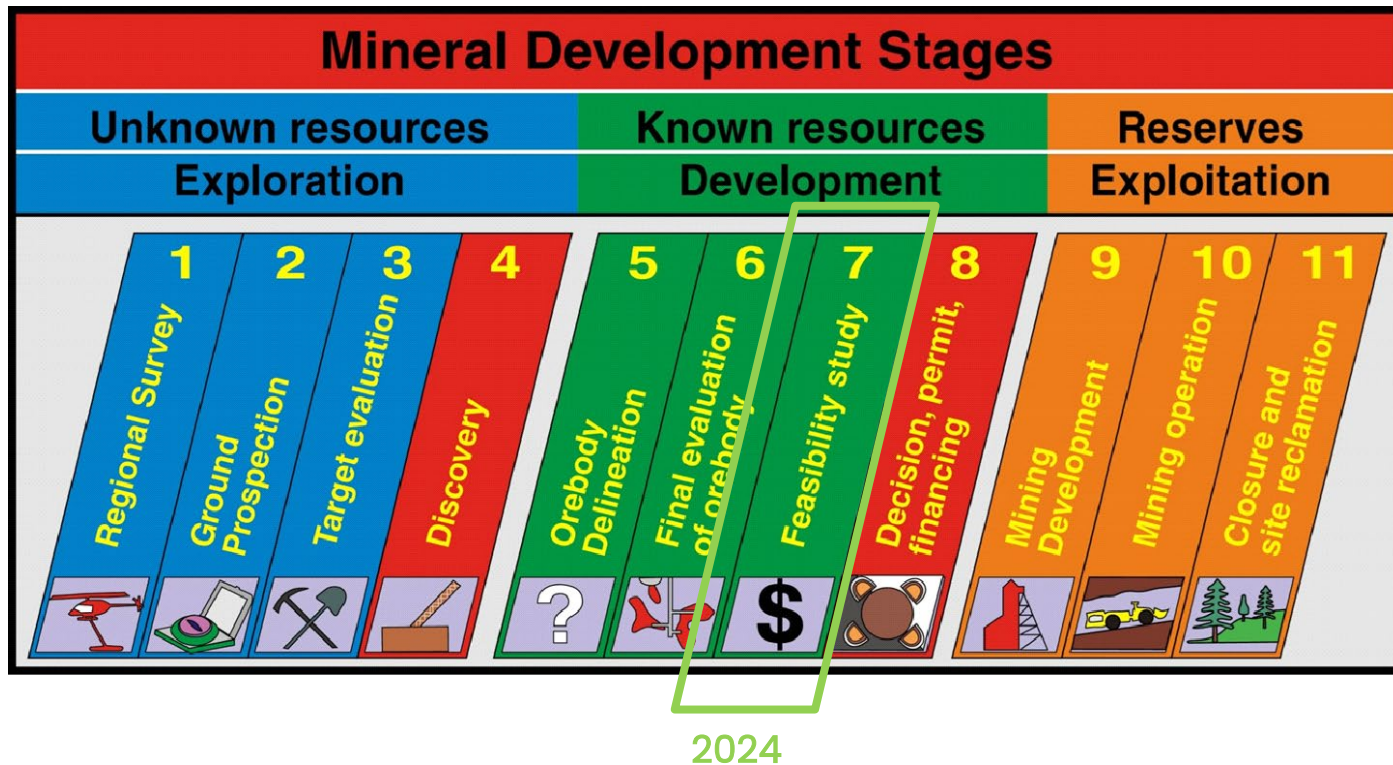
Lac Knife: Focus Graphite's flagship project

Lac Knife is our 100% owned, high-grade crystalline flake graphite deposit



About 27 km south of Fermont, in the Côte-Nord district of northeastern Québec

Lac Knife is in the feasibility stage



Potential: to produce low-cost, high margin, high-purity graphite concentrate

- In March 2023, Focus Graphite announced an update to its 2014 feasibility study (FS) that positioned Lac Knife as potentially one of the lowest-cost, highest margin future producers of high-purity graphite concentrate.
- The FS, updated by DRA Global Limited, is based on a 27-year mine life and produced a Pre-tax Net Present value (NPV) of \$500.9M calculated at a discounted cash flow (DCF) rate of 8%. Pre-tax, the financial model has an Internal Rate of Return (IRR) of 28.70%, and a capital payback period of 2.8 years.
- The after-tax financial model has an NPV of \$285.7M calculated at a DCF of 8%, an IRR of 22.40%, and a capital payback period of 3.3 years.
- The Initial Capital Expenditure (CAPEX) of the project is C\$236.5M and the annual Operating Expenses (OPEX) are \$25.9M. The model is based on an average graphite concentrate sales price of US\$1,679 per tonne.

Mineral Resources and Reserves Estimation

- Total Measured and Indicated Mineral Resources are now estimated at 12.0 M tonnes grading 15.34% Cg, an increase of 5.76 M tonnes compared to 2014
- Total Mineral Reserves are now estimated at 9.31 M tonnes grading 14.97% Cg, an increase of 1.45 M tonnes compared to 2014

Treatment Plant and concentrates

- Salable concentrate production increases from 44,300 tonnes per year (tpy) to 47,781 tpy, an increase of 7.9% relative to the 2014 design (total of 1,290,087 tonnes grading 97.8% Cg)
- 4 products will be marketed; the ultrafine fraction (-400 mesh or $-37\ \mu\text{m}$) of graphite concentrates will not be recovered at the plant due to its low purity (86.8% Cg)

Mine expected to be low footprint but high yield

- At its maximum extension, the pit opening will cover an area of 319,000 m² (0.32 km²), an increase of 59.9% relative to the 2014 design
- At 0.32 km², the footprint of the Lac Knife project pit **remains 75 times smaller than that of Arcelor Mittal's Mont Wright mine**, which is 24 km²
- The redesigned pit will reach a maximum depth of 150 metres while the model developed in 2014 considered a maximum operating depth of 100 metres
- Changes to the pit design will allow Focus Graphite to extract 9.31 M tonnes of ore at an average grade of 14.97% Cg over life of mine, which is an 18.5% increase over the 2014 design

Plan: open pit graphite mine with average annual production capacity of about 48,000 tonnes

Target: Open pit graphite mine with an average annual production capacity of 47,781 tonnes of salable graphite concentrate grading an average 98.2 % Cg for all size fractions (99.7% Cg for +80 mesh flake (+177 μm)¹) at an average mill feed rate of 365,320 tonnes per year over a 27-year life of mine (LoM).

Feasibility Study: the new feasibility study produced by DRA Global Limited incorporates engineering upgrades designed to improve the environmental performance of the project, including:

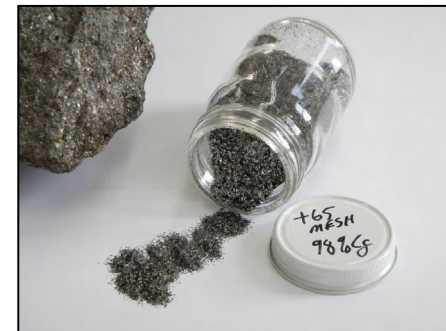
- a new tailings, waste rock, and water management system for the project, designed by NewFields Canada Mining & Environment

¹Source: 2023 Lac Knife feasibility study highlights available at www.focusgraphite.com under news/press releases

Flake graphite concentrate production and selling price (2023) ¹				
Particle size distribution	Weight (%)	Purity (% Ct)	Annual tonnage	Average price (\$US/t)
Mesh +48:	10	99.7	5,000	2,040
Mesh -48+80:	23	99.7	11,488	1,868
Mesh -80+150:	31.3	99.4	15,655	1,762
Mesh -150+400:	31.3	97	15,638	1,579
Mesh -400 (not included in weighted average):	4.4	86.8	2,219	
Weighted average:	100	98.2	47,781	1,679
Total recoverable product:	95.6	98.7	47,781	1,679

¹ Source : "NI 43-101 Technical Report – Feasibility study update, Lac Knife graphite project, Québec, Canada". Technical Report NI 43-101 prepared by DRA Global for Focus Graphite inc. Effective on March 6, 2023. Report available at: www.sedarplus.ca/ under Focus Graphite Inc.

* Selling price established by Benchmark Mineral Intelligence in 2022.



Environmental and social impact assessment (ESIA) is underway

WSP (formerly Wood Environment and Infrastructure Solutions) is conducting two important ESIA-related investigations:

- New air quality model and dust management plan
- Hydrogeochemical model for the project

Other work completed or underway for the ESIA update includes:

- Surveys of ground and surface water quality, lake bottom sediment, soil and overburden
- Wetland characterization, inventory of special-status and invasive plant species, and Inventory of Chiroptera (bat) fauna
- Engagement and consultation with local and First Nations communities – MU Conseils, experts in communications with the local Innu community, have been engaged to facilitate the dialogue and assist Focus Graphite in achieving social acceptability for the project

Surveys, investigations, studies, and planned activities for 2024–2025

The realization of the proposed work, studies, and activities for the Lac Knife project from January 1, 2024, to June 30, 2025, is contingent upon raising new capital.

Main objective of the program: complete the update ESIA for the Lac Knife project and submit the updated report with annexes to the Ministry of the Environment, Climate Change, Wildlife, and Parks of Québec (MELCCFP) no later than June 30, 2025.

- New air quality model and dust management plan
- New hydrogeochemical model for the project
- Preparation of the water management plan and hydrological balance for the Lac Knife project (regional and mining site scales)
- Environmental characterization of graphite ore and waste rock from the project
- Study on the pit backfilling of the Lac Knife project (Mining Act Article 232.3(5))
- Feasibility-level design of the wastewater filtration, treatment, and runoff plant for the project
- Noise and vibration study tailored to the results of the updated feasibility study
- Tailings dam failure study adapted to the results of the updated feasibility study

Surveys, investigations, studies, and planned activities for 2024–2025

- New consultation with local and First Nations communities – MU Conseils, experts in communication strategies with the Innu Nations of the North Shore, and communication firm, Refined Substance, have been hired to facilitate dialogue and help Focus Graphite achieve social acceptability for the Lac Knife project.
- Technical-Economic study on the optimal recovery of by-products from the project (pyrrhotite and – 400 mesh fraction of concentrates) (Mining Act Article 234).
- Sustainable development study tailored to the results of the updated feasibility study.
- Economic and market study on concentrate processing in Québec.
- New concentrate recovery tests in a pilot plant for purification trials, performance tests (battery anodes), and evaluation by potential users.
- Continue collaboration with the Research Institute on Mines and Environment (RIME) at the University of Québec in Abitibi-Témiscamingue (UQAT) as part of the applied R&D project titled ‘Valorization of dolomite in the management of waste from a graphite mine’ led by researcher Isabelle Demers.

Relations with First Nations: signed pre-project agreement



November 2021 field visit with two representatives from ITUM, Jimmy McKenzie and Donald Einish.

- Pre-project agreement for the Lac Knife project signed with the Band Council of the ITUM Nation on October 28, 2014. Meetings between both parties started back in 2012.
- Focus Graphite and ITUM leaders who negotiated and signed this agreement are no longer in office but both parties still consider themselves bound by it. Few elements of the agreement have been implemented since 2014, but communication between Focus Graphite and the ITUM band Council remains regulated.
- November 2021 visit appreciated by community representative and director of the ITUM Rights and Territory Protection Office.
- ITUM was informed of the resumption of activities at the Lac Knife project site in 2021. Focus Graphite continues to keep ITUM informed of any corporate development as well as all published results as part of their research on the Lac Knife project. Our last meeting with them was in December 2023.

Leading research into optimizing suitability of high-quality flake graphite for battery storage

Dr. Joseph E. Doninger, MSc, BSc, serves as the Director of Manufacturing and Technology at Focus Graphite. He is an internationally renowned expert in graphite processing, the inventor of 6 patents, and the author of over 29 technical articles and presentations related to graphite and mineral processing, as well as the use of graphite in energy storage systems.

Since joining Focus Graphite in 2012, Dr. Doninger's work has been an integral part of the company's research and development program. His effort focuses on optimizing the suitability of high-quality flake graphite found in Focus properties for various battery storage applications.

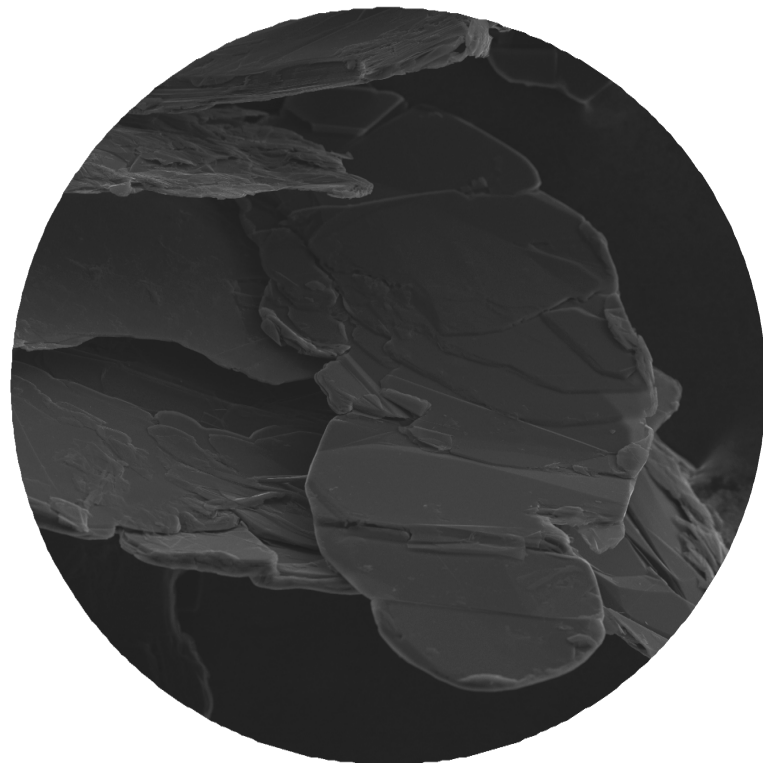


Graphite processing concept presented at CIM conference in May 2023

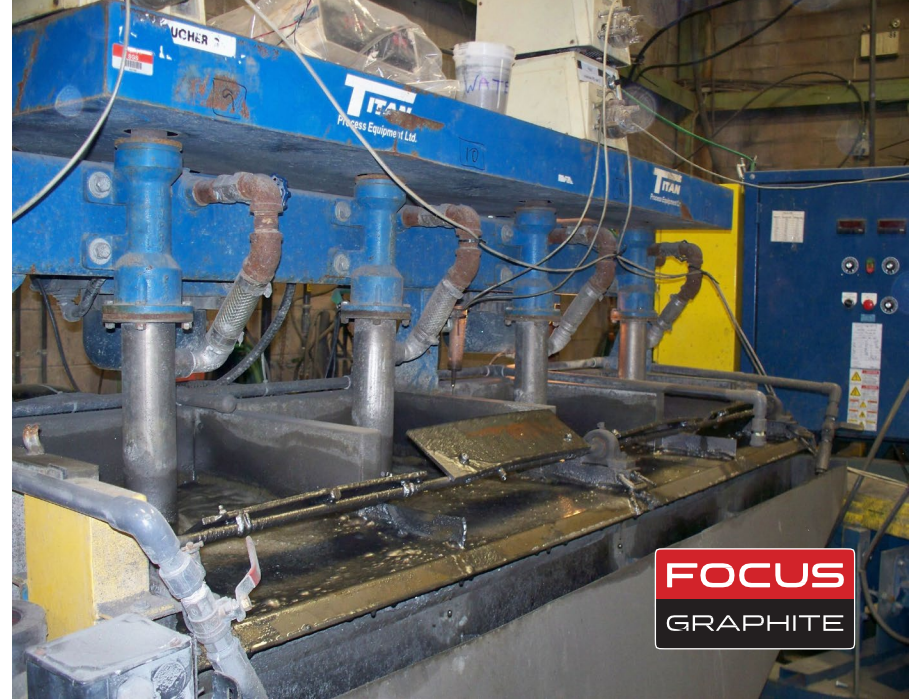


- Dr. Doninger presented his concept for the graphite processing of the Lac Knife project at the CIM conference in Montreal in May 2023.
- The presentation covers the results of the flotation tests at the Lac Knife pilot plant in 2014, which produced high-purity flake graphite with a graphitic carbon content of up to 98.3%. It highlights that additional electrothermal purification steps performed on the Lac Knife graphite concentrate enabled the recovery of a portion of the graphite concentrates with a graphitic carbon content exceeding 99.98%. This makes it suitable for high-performance applications potentially beyond its intended general use as battery-grade graphite. The purified Lac Knife graphite demonstrated increased electrical conductivity, enhanced first-cycle capacity, and a reduction in irreversible capacity loss compared to ordinary natural flake graphite and synthetic graphite.
- The proposed process is also environmentally friendly and avoids the use of acids, which are commonly used to purify graphite concentrate.

- Evaluate the performance of proposed flowsheet under continuous operating conditions
- Produce concentrate for downstream testing
- Generate data to support engineering design
- Generate representative tailings samples to use in environmental studies
- Prepare samples for customers and performance testing of products
- These samples are available for use and testing by potential offtakers eager to evaluate the superior qualities of Lac Knife flake graphite.



Cleaning circuit and rougher flotation cell



Comparison of performance: Lac Knife flake graphite vs synthetic graphite in lithium-ion coin cells

Focus Graphite Coin Cell Test Samples	1 st Cycle Capacity, (Ah/Kg)	Irreversible 1 st Cycle Loss (%)	Reversible Capacity (Ah/Kg)
Focus Li ion Fine Grade of Coated SPG D ₅₀ = 21.44 μ. Tap Density = 0.93 g/cc Surface Area = 0.44 m ² /g	366.0	0.65% (99.35% Efficient)	363.6
Commercial Li ion Synthetic Grade # 1 D ₅₀ = 15.8 μ. Tap Density = 0.88 g/cc Surface Area = 0.97 m ² /g	347.2	6.45% (93.55% Efficient)	324.8 (10.7% lower)
Commercial Li ion Synthetic Grade # 2 D ₅₀ = 20.6 μ. Tap Density = 0.87 g/cc Surface Area = 1.15 m ² /g	345.4	3.46% (96.54% Efficient)	333.4 (8.3% lower)



Lac Tétépisca: A recent discovery with upside potential to become one of the biggest sources of high-quality flake graphite in North America

- MOGC is defined by a linear 1 km-long northeast trending geophysical anomaly
- Maiden Mineral Resource Estimate completed in February 2022
- Working with First Nations and Community relations experts MU Conseils to develop a mutually beneficial relationship with the local Pessamit Innu community on whose Nitassinan (traditional lands) Lac Tétépisca is located

Target: large tonnage, open pit flake graphite deposit grading minimum 10% graphitic carbon (Cg)

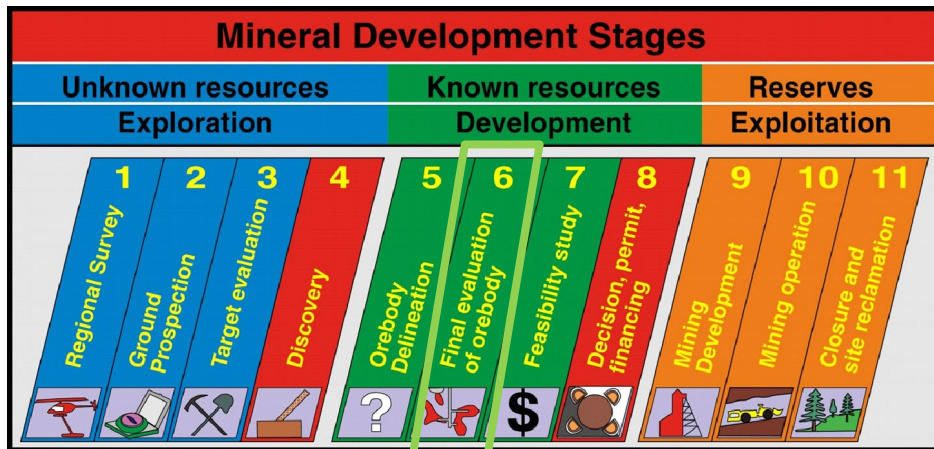
- Between 2014 and 2020, 106 drill holes totaling 16,467 metres were drilled over a 1.4 km distance.
- In 2021, a total of 5,177 samples were sent for analysis.
- The deposit covers 304,000 square metres from surface to a vertical depth of about 200 metres with an average true thickness of about 85 metres.

On February 17, 2022, Focus released the highlights of DRA America's Mineral Resource Estimate (MRE) on the Manicouagan-Ouest Graphitic Corridor (MOGC) prospect.

The MOGC prospect hosts:

- Open pit constrained Indicated mineral resources of 59.3 Million tonnes (Mt) grading 10.61% Graphitic Carbon (Cg), equivalent to **6.3 Mt** of natural flake graphite in-situ
- Inferred mineral resources of 14.9 Mt grading 11.06% Cg for an estimated content of **1.6 Mt** of natural flake graphite in-situ.

Lac Tétépisca hosts one of the largest undeveloped natural flake graphite deposits in Québec & North America



2024

The MOGC prospect is now classified as a “mineral deposit” per *CIM Standards on Mineral Resources and Reserves, Definitions and Guidelines*.

A mineral deposit is the fundamental building block needed to move the Lac Tétépisca project from Stage 5 of the mineral development process to Stage 6, the aim of which is to complete a Preliminary Economic Assessment of the MOGC graphite deposit.

Focus potentially holds enough flake graphite resources to meet U.S. demand for more than 50 years

In 2021, the USA did not produce natural graphite.

According to the USGS, U.S. natural graphite imports for 2021 were estimated at **53,000 t**, about 57% of which were flake and high-purity flake.

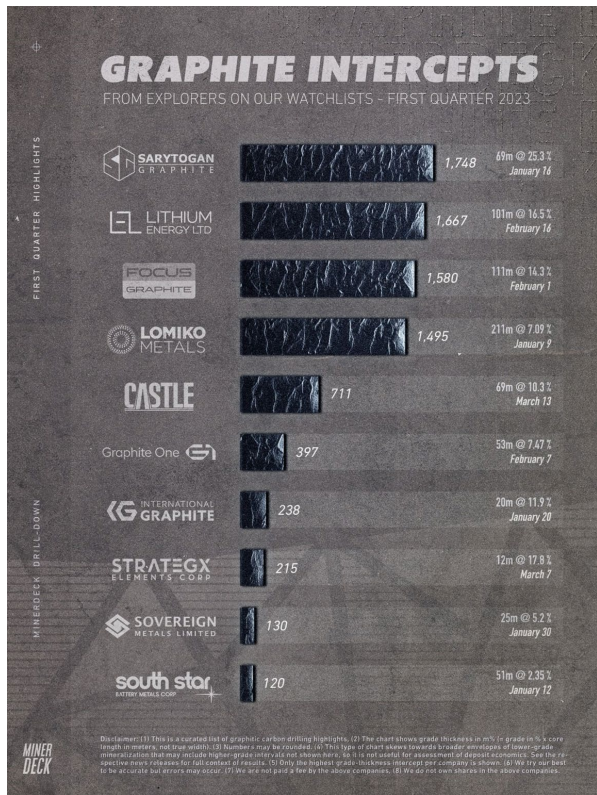
With **6,300,000 t** of graphite in the ground (Indicated resources) at Lac Tétépisca, **Focus potentially holds sufficient flake graphite resources to meet current U.S. demand for the next 50+ years!**

In June 2022, Focus received a \$350,000 grant from the Québec Ministry of Mines (MRNF) to support a geometallurgical study of the MOGC deposit.

A “GeoMet” study is a recent practice in the mining industry – it combines geology, mineralogy, geochemistry, and geostatistics with metallurgy, or, more specifically, extractive metallurgy, to create a spatially based predictive model for mine production planning in ore deposits with complex or variable ores, and for risk management and mitigation during ore processing plant design.

The principal objective of the study is to design a metallurgical process for the future Lac Tétépisca ore processing plant that will be optimized to ensure the maximum recovery of large flakes and the highest possible Cg grades in concentrate.

Q1 2023 drill results recognized as one of Miner Deck's top three graphite intercepts for the quarter

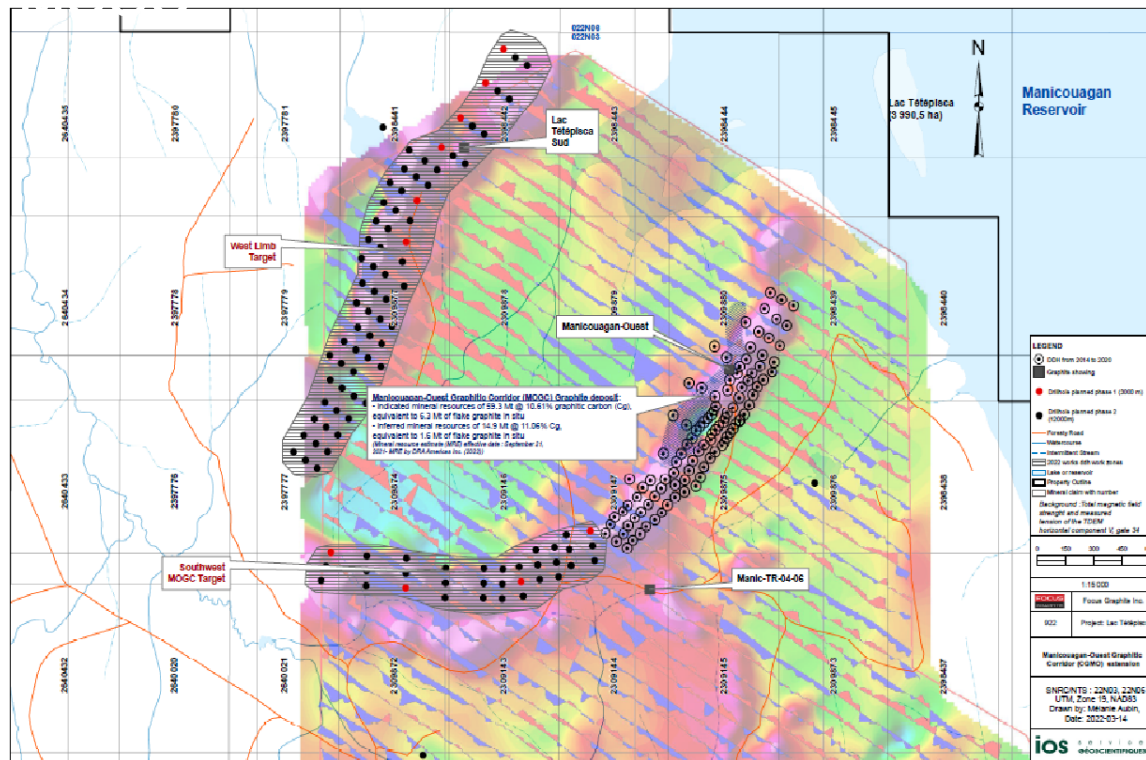


The 2022 exploration drilling program at Lac Tétépisca was completed in November, ahead of schedule and under budget. A total of 74 holes were completed representing 14,900 metres.

Highlights:

- 92.42 m grading 14.28% Cg in hole LT-22-131 – **Recognized as one of Miner Deck's top three graphite intercepts of Q1 2023**
- 86.66 m grading 15.00% Cg in hole LT-22-130
- 91.26 metres grading 13.25% Cg including 36.00 metres grading 18.30% Cg and 25.14 metres grading 14.83% Cg in Hole LT-22-129
- 94.06 metres grading 10.45% Cg including 33.65 metres grading 16.81% Cg in Hole LT-22-125
- 91.83 m grading 13.84% Cg in hole LT-22-132

Exploration yields indication of additional resources



The implementation of the proposed work, studies, and activities for the Lac Tétépisca project between January 1, 2024 and June 30, 2025, is subject to raising new capital.

- Complete the preparation and assaying of core samples from the last six deep definition drill holes at the MOGC deposit conducted in 2022 and the last 74 exploration drill holes targeting the southwest MOGC and West Limb areas.
- New estimation of mineral resources for the Lac Tétépisca project in accordance with NI 43-101 standards (target: Indicated Resources of 75 Mt at a grade of 10% Cg, equivalent to 7.5 Mt of graphite in situ).
- Signing of a pre-project agreement with the Innu Nation of Pessamit in 2024.
- Beginning of the baseline environmental studies program for the Lac Tétépisca project (Phase 1) (wildlife, flora, wetlands, water regime, soil and bedrock, etc.).
- Initial series of metallurgical tests in the pilot plant to enhance the recovery and grade of concentrate fractions, calibrate the concentrator process flowchart, and obtain sufficient quantities of concentrates for further purification and performance testing (battery anodes) and evaluation by potential users.
- Preliminary Economic Assessment (PEA) of the Lac Tétépisca project to be submitted no later than June 30, 2025.

- In March 2022, Focus Graphite met for the first time with the Council of the Pessamit Innu on whose Nitassinan (traditional lands) the Lac Tétépisca project is found.
- We listened to their concerns, answered their questions, and gained an understanding of their interests and priorities.
- Initial discussions were very positive and the Pessamit expressed an interest in partnering with us to develop this exciting opportunity to supply a mineral (graphite) that is so critical to the green energy revolution.
- Elections were held in August 2022 and again this past August, and the newly elected band council has demonstrated an openness to business opportunities.
- We have sent them a letter of congratulations and plan to meet with them again once we have finalized the next steps of the work program at Lac Tétépisca

Summary: Focus Graphite has enough resources to become a major North American source of flake graphite

- More than **two-thirds of battery-grade graphite**, a critical mineral, **comes from China**. There are no graphite mines operating in the United States, and **North America needs a secure source of high purity large-flake graphite**. Focus Graphite aims to be that source.
- Immediate step: **raise \$10M to complete studies at Lac Knife** and continue to **explore at Lac Tétépisca**. Looking into offtake agreements and strategic partners.
- **Leader in technical innovation**: in September 2023, Focus Graphite received a final copy of the International Preliminary Report on Patentability for its patent application for Advanced Anode Material Comprising Spheroidal Silicon Enhanced Graphite Particles, which includes a determination that **all claims are novel and inventive**.
- Committed to **building strong relations** with **First Nations** and **local communities**, as well as other **stakeholders** from **government and industry**.
- **Tight capital structure; approximately 72.5 million shares outstanding** on a fully diluted basis.

Have a question?

You can put your hand up using the Zoom react button to raise hand, and we will call on you in order. Remember to take yourself off mute.

You can also type it in the chat box, so we can relay it to the group.

If we run out of time, please email your question to info@focusgraphite.com, and we will respond by end of day Monday.



FOCUS

GRAPHITE

Investor Contact:
Kimberly Darlington
kdarlington@focusgraphite.com

TSX.V: FMS | OTCQX: FCSMF | FSE: FKC | www.focusgraphite.com

September 2024