



# FOCUS GRAPHITE

**Developing High-Grade Flake Graphite Projects  
to Supply Top Quality Battery-Grade Graphite  
for the Green Energy Revolution**

**April, 2022**

---

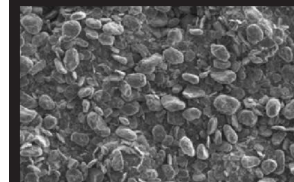
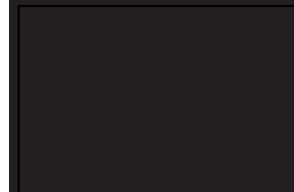
TSX.V: FMS | OTCQX: FCSMF | FSE: FKC | [www.focusgraphite.com](http://www.focusgraphite.com)

# Cautionary Note on Forward Looking Statements

This presentation contains “forward-looking information” within the meaning of Canadian securities legislation. All information contained herein that is not clearly historical in nature may constitute forward-looking information. Generally, such forward-looking information can be identified by the use of forward-looking terminology such as “plans”, “expects” or “does not expect”, “is expected”, “budget”, “scheduled”, “estimates”, “forecasts”, “intends”, “anticipates” or “does not anticipate”, or “believes”, or variations of such words and phrases or state that certain actions, events or results “may”, “could”, “would”, “might” or “will be taken”, “occur” or “be achieved”. Forward-looking information is subject to known and unknown risks, uncertainties and other factors that may cause the actual results, level of activity, performance or achievements of the Company to be materially different from those expressed or implied by such forward-looking information, including but not limited to: (i) risks relating to widespread epidemics or pandemic outbreak including the COVID-19 pandemic; the impact of COVID-19 on our workforce, consultants, suppliers and other essential resources and what effect those impacts, if they occur, would have on our business; (ii) volatile stock price; (iii) the general global markets and economic conditions; (iv) the possibility of write-downs and impairments; (v) the risk associated with exploration, development and operations of mineral deposits; (vi) the risk associated with establishing title to mineral properties and assets; (vii) the risks associated with entering into joint ventures; (viii) fluctuations in commodity prices; (ix) the risks associated with uninsurable risks arising during the course of exploration, development and production; (x) competition faced by the resulting issuer in securing experienced personnel and financing; (xi) access to adequate infrastructure to support mining, processing, development and exploration activities; (xii) the risks associated with changes in the mining regulatory regime governing the resulting issuer; (xiii) the risks associated with the various environmental regulations the resulting issuer is subject to; (xiv) risks related to regulatory and permitting delays; (xv) risks related to potential conflicts of interest; (xvi) the reliance on key personnel; (xvii) liquidity risks; (xviii) the risk of potential dilution through the issue of common shares; (xix) the Company does not anticipate declaring dividends in the near term; (xx) the risk of litigation; and (xxi) risk management. Forward-looking information is based on assumptions management believes to be reasonable at the time such statements are made, including but not limited to, continued exploration activities, no material adverse change in metal prices, exploration and development plans proceeding in accordance with plans and such plans achieving their stated expected outcomes, receipt of required regulatory approvals, and such other assumptions and factors as set out herein. Although the Company has attempted to identify important factors that could cause actual results to differ materially from those contained in the forward-looking information, there may be other factors that cause results not to be as anticipated, estimated or intended. There can be no assurance that such forward-looking information will prove to be accurate, as actual results and future events could differ materially from those anticipated in such forward-looking information. Such forward-looking information has been provided for the purpose of assisting investors in understanding the Company’s business, operations and exploration plans and may not be appropriate for other purposes. Accordingly, readers should not place undue reliance on forward-looking information. Forward-looking information is made as of the date of this presentation and the Company does not undertake to update such forward-looking information except in accordance with applicable securities laws.

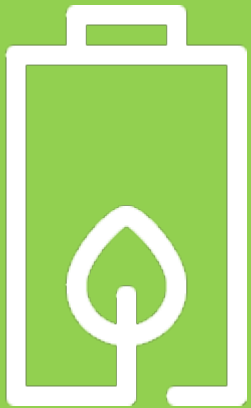
Qualified Person: The included scientific and technical information regarding exploration activities as defined in NI 43-101 s. 1.1, was either prepared, reviewed and/or approved by Marc-André Bernier géo. (QC), P.Geo., (ON), M.Sc., Technical adviser for Focus Graphite Inc. and a Qualified Person under National Instrument (NI) 43-101 guidelines.

*All measurements provided in this presentation are in metric units. All monetary amounts are expressed in Canadian dollars (\$) unless otherwise indicated.*



The world is poised at the cusp of a **green energy revolution**, where renewable energy sources are replacing traditional sources of energy, such as oil, coal and gas. One of the major shifts taking place is the replacement of vehicles that run on fuel to zero-emission electric vehicles (EVs).

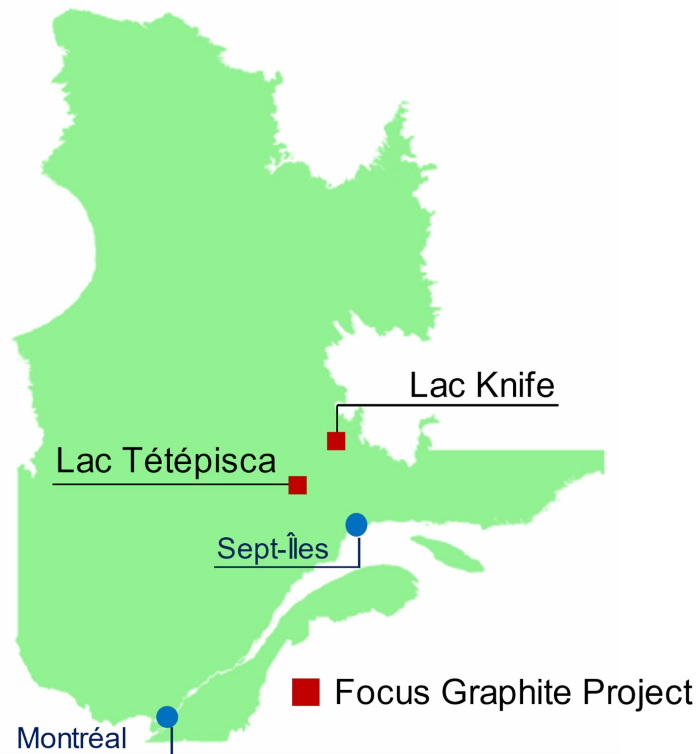
These EVs require powerful batteries that are made of critical materials that include lithium, cobalt, nickel, manganese and **graphite**.



Graphite makes up more than half of the battery's components, and for EV batteries to be sufficiently powerful to run vehicles, the graphite used for the battery's anode has to be high-quality, with a highly crystalline structure.

## **Focus Graphite is developing some of the highest-quality flake graphite properties in the world.**

- Located in Quebec, Canada, a top-rated mining jurisdiction
- infrastructure such as roads and low-cost hydroelectricity that make remote mine sites easier and cheaper to access and operate
- Government's \$90 million plan for the development of critical and strategic minerals (CSM) 2020-2025 to encourage the production of materials needed for renewable energy
- a financial assistance program for exploration projects for critical and strategic materials, such as graphite





# Our Team



Marc Roy  
President and CEO  
Focus Graphite



Kimberly Darlington  
Communications  
Focus Graphite



Judith Mazvihwa-Maclean  
CFO  
Focus Graphite



Marc-André Bernier,  
géo.  
Table Jamésienne de  
Concertation Minière  
(TJCM) - Senior  
technical consultant



Réjean Girard, géo.  
President of IOS  
Services  
Géoscientifiques inc.  
– Technical  
consultant

# Our Values

## At Focus we believe that:

- We all must adopt **renewable, sustainable energy solutions** to preserve our planet.
- Mining and processing the minerals that are critical to the production of green energy solutions **can be achieved in a responsible way** that protects the environment and makes use of sources of clean energy.
- People – be they our employees, clients, or members of the communities in which we operate – are the most important factor in our success. **We are open and honest with all our stakeholders.**

More than two-thirds of the battery-grade graphite available today comes from China, and there are **no graphite mines in operation in the United States**. North America needs a secure source of high purity large-flake graphite – and Focus Graphite plans to be that source.

We seek to play a key role in supplying the raw materials needed for today's green energy revolution.



An aerial photograph showing a vast, dense forest of evergreen trees. A winding dirt road or path cuts through the forest. In the upper portion of the image, a large, calm lake is visible, bordered by more forest. On a small peninsula or island in the lake, there is a small cluster of buildings and structures, likely a settlement or a small town. The overall scene is a mix of natural forest and human development.

# Lac Knife: Focus Graphite's flagship project

TSX.V: FMS | OTCQX: FCSMF | FSE: FKC | [www.focusgraphite.com](http://www.focusgraphite.com)





# Lac Knife: Focus Graphite's flagship project



# Lac Knife: Focus Graphite's flagship project

- 100% owned, high-grade crystalline flake graphite deposit located in the Côte-Nord district of northeastern Québec, about 27 km south of Fermont.
- A feasibility study prepared by Met-Chem Canada Inc. (now DRA Americas Inc.) in 2014 indicated positive project economics that, at the time, positioned the project as potentially one of the lowest-cost, highest-margin producers of high purity flake graphite concentrate in the world.
- In 2021, Focus commissioned DRA Americas Inc. to update and modify the 2014 feasibility study for the Lac Knife Project and prepare a new NI 43-101 Technical Report – expected end of Q2 2022.
- Also currently expediting the completion of the Lac Knife environmental and social impact assessment (ESIA) study, also expected for delivery Q2 2022.
- Since 2014, Focus has conducted extensive testing of its Lac Knife flake graphite that shows its superior performance in Li-Ion batteries compared to standard commercial grades of natural and synthetic graphite

# Lac Knife: Focus Graphite's flagship project

- **Target:** Open pit graphite mine with an average annual production capacity of 44,300 tonnes of graphite concentrate grading an average 96.6 % Cg for all size fractions (98.1% Cg for +200 mesh flake (+75  $\mu\text{m}$ ))<sup>1</sup> over a 25-year mine life.
- **Feasibility Study:** the new feasibility study (FS) underway by DRA Americas will incorporate engineering upgrades designed to improve the environmental performance of the project, including:
  - a new tailings, waste rock and water management system for the project, currently being designed by NewFields Canada Mining & Environment
  - MedaTech is developing an all-electric mine plan, using electric motors instead of combustion engines in mobile equipment

<sup>1</sup>Source: 2014 Lac Knife feasibility study technical report available at [www.sedar.com](http://www.sedar.com) under Focus Graphite Inc.

# Lac Knife: Focus Graphite's flagship project

## **ESIA (Environmental and Social Impact Assessment) update underway:**

- Wood – Environment and Infrastructure Solutions is conducting two important ESIA-related investigations:
  - new air quality model and dust management plan
  - hydrogeochemical model for the project
- Other work completed or underway for the ESIA update includes:
  - Surveys of ground and surface water quality, lake bottom sediment, soil and overburden
  - Wetland characterization, inventory of special-status and invasive plant species and Inventory of Chiroptera (bat) fauna
  - Engagement and consultation with local and indigenous communities
    - MU Conseils, experts in communications with the local Innu community, have been engaged to facilitate the dialogue and assist Focus in achieving social acceptability for the project



# Lac Knife: Focus Graphite's flagship project

## Next Steps (2022–2023):

- Complete the Feasibility and ESIA studies, together with the Mine Closure Plan for the project and submit the reports to the Québec ministry of the Environment and Climatic Changes (MELCC) for review.
- Upon the ESIA study being deemed “receivable” by the MELCC, the project will move to the Public Information and Consultation stage by the Québec Environmental Public Hearings Office (BAPE), the next step in the environmental review process. Achieving “social acceptability” is a fundamental condition for Focus to move the Lac Knife project forward along the path to commercial production.
- Sign community partnership agreements and negotiate an Impact and Benefit Agreement (IBA) with the Innu Takuaikan Uashat mak Mani-utenam (ITUM) First Nation.
- Complete the Scoping and Market Study on Processing in Québec, a new requirement under the Québec Mining Act to obtain a Mining Lease.
- Initiate detailed engineering studies.
- Obtain the Government Decree authorizing Focus to move the Lac Knife project to construction and mining.



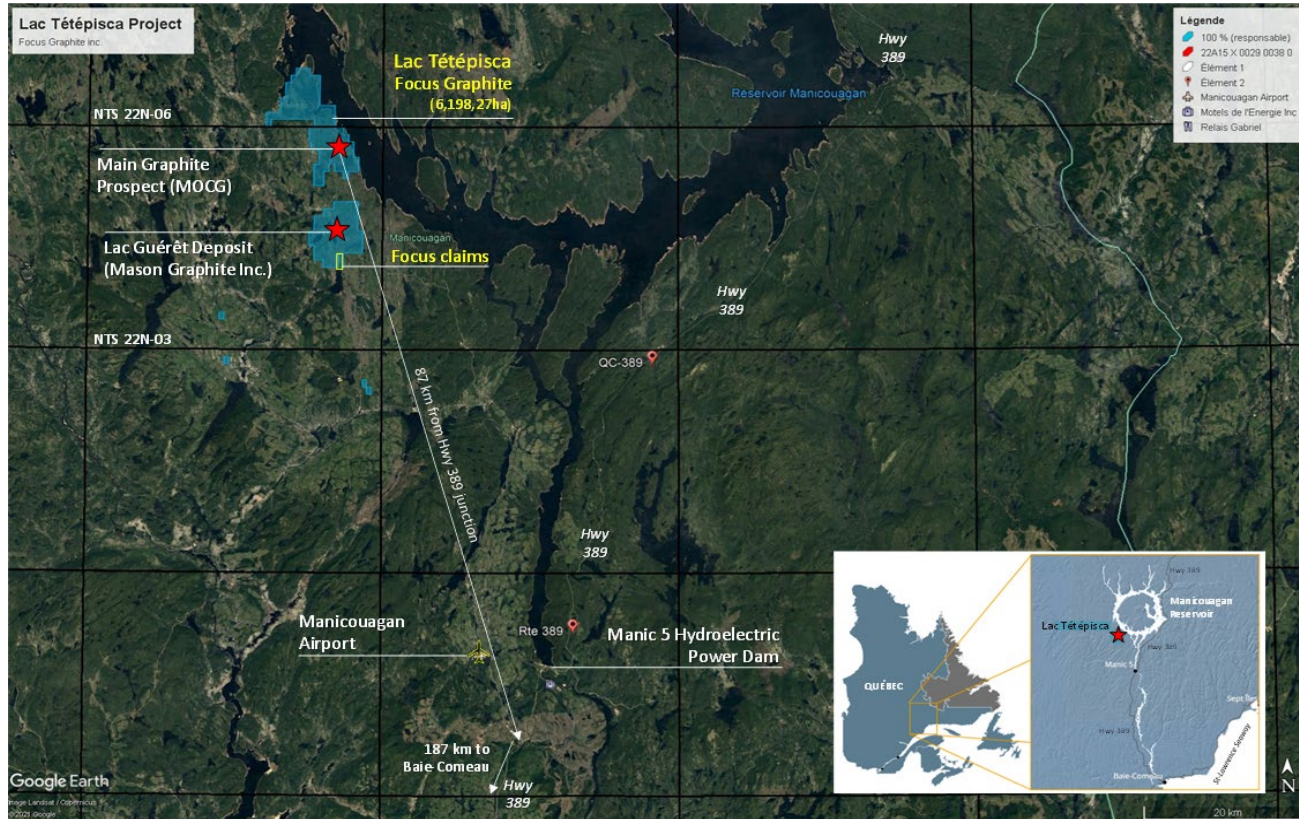
# **Lac Tétépisca: A new discovery with the potential to become one of the biggest sources of high-quality flake graphite in North America**

TSX.V: FMS | OTCQX: FCSMF | FSE: FKC | [www.focusgraphite.com](http://www.focusgraphite.com)





# Lac Tétépisca Project



# Lac Tétépisca Project

- Manicougan Hydroelectric Reservoir, Côte Nord region of northeastern Québec, 234km north of the city of Baie-Comeau
- 100%-owned, accessible year-round by road from highway 389.
- Two contiguous properties, Lac Tétépisca and Lac Tétépisca Nord, that together form a block of 115 claims with a total area of over 6,000 hectares.
- Host to the **Manicouagan-Ouest Graphitic Corridor (MOGC)**, discovered by Focus in 2012 and defined by a linear 1 km-long northeast trending geophysical anomaly.
- Maiden Mineral Resource Estimate completed in February 2022.
- Working with Indigenous and Community relations experts MU Conseils to develop a mutually beneficial relationship with the local Pessamit Innu community on whose Nitassinan (traditional lands) Lac Tétépisca is located



# Lac Tétépisca Project

- **Target:** large tonnage, open pit flake graphite deposit grading a min. 10% graphitic carbon (Cg).
- Between 2014 and 2020, 106 drill holes over a 1.4 km distance were drilled for a total collection of 16,467 m.
- In 2021, a total of 5177 samples were sent for analysis.
- The deposit covers 304,00 square metres from surface to a vertical depth of about 200 metres with an average true thickness of about 85 metres.

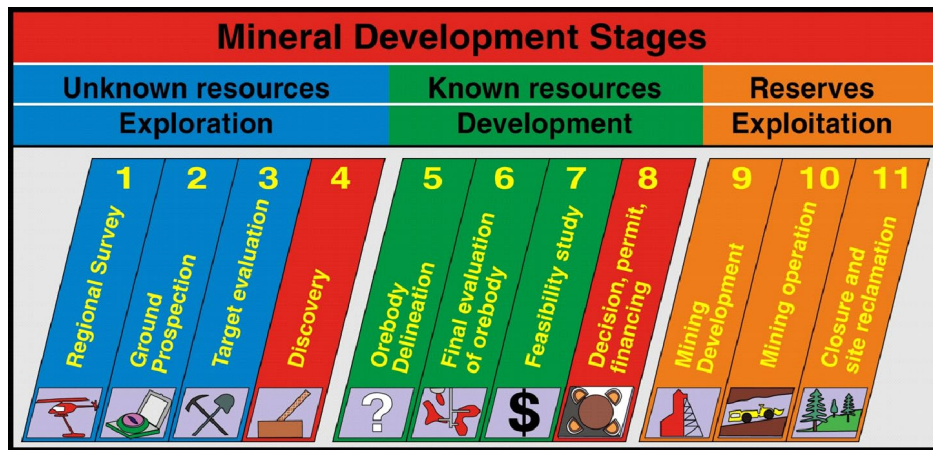
# Lac Tétépisca Project

On February 17, Focus released the highlights of DRA America's Mineral Resource Estimate ("MRE") on the Manicouagan-Ouest Graphitic Corridor ("MOGC") prospect. The MOGC prospect hosts:

- Open pit constrained "Indicated" mineral resources of 59.3 Million tonnes ("Mt") grading 10.61% Graphitic Carbon ("Cg"), equivalent to **6.3 Mt** of natural flake graphite in-situ; and
- "Inferred" mineral resources of 14.9 Mt grading 11.06% Cg for an estimated content of **1.6 Mt** of natural flake graphite in-situ.

# Lac Tétépisca Project

- The MOGC prospect is now classified as a “mineral deposit” per *CIM Standards on Mineral Resources and Reserves, Definitions and Guidelines*. A mineral deposit is the fundamental building block needed by Focus to move the Lac Tétépisca project from Stage 5 of the mineral development process (MDP) to Stage 6, the aim of which is to complete a Preliminary Economic Assessment (“PEA”) of the MOGC graphite deposit.



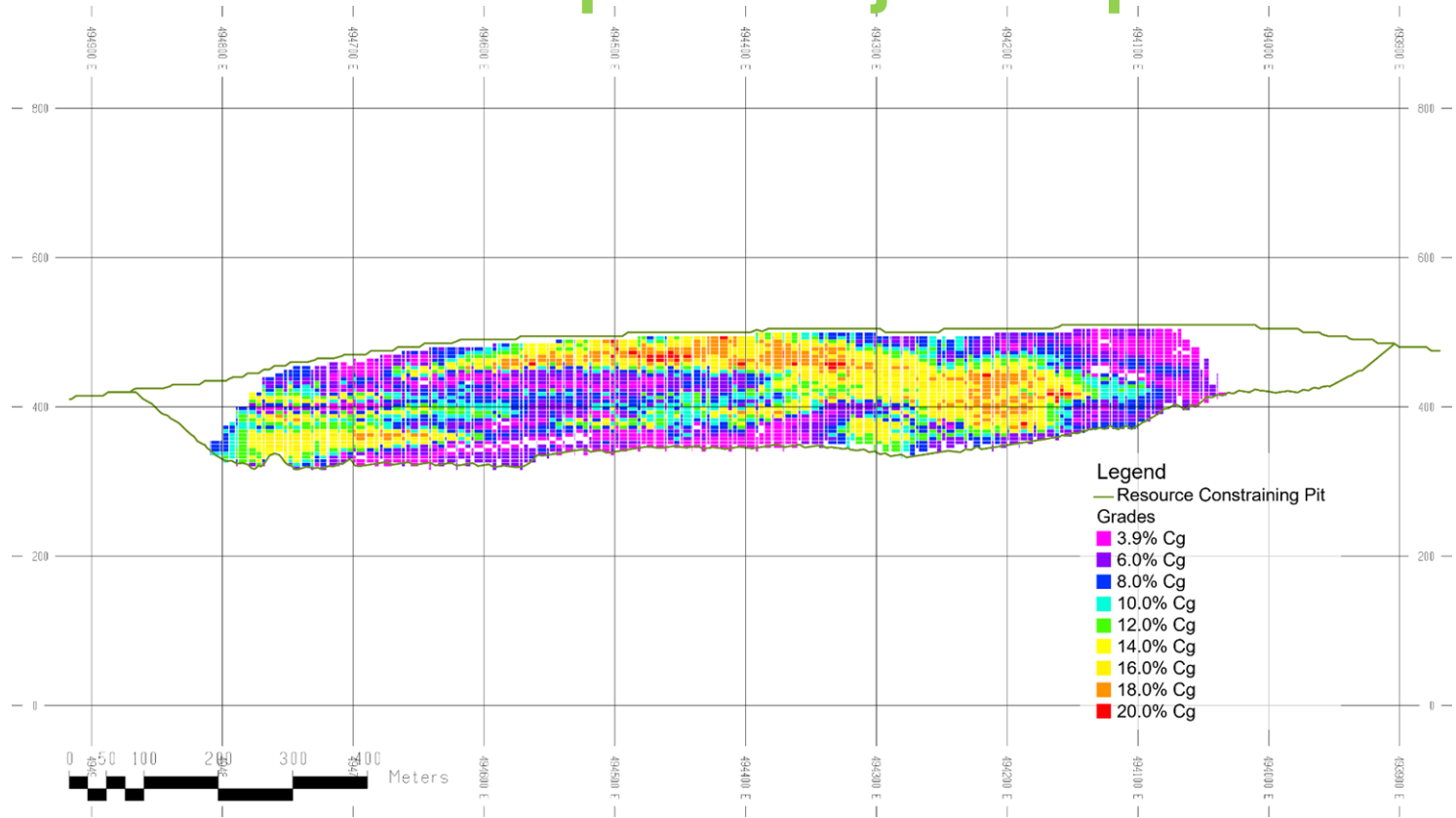
- Focus can now claim that its Lac Tétépisca project holds **one of largest undeveloped natural flake graphite deposits in Québec, and in all North America!**

# Lac Tétépisca Project

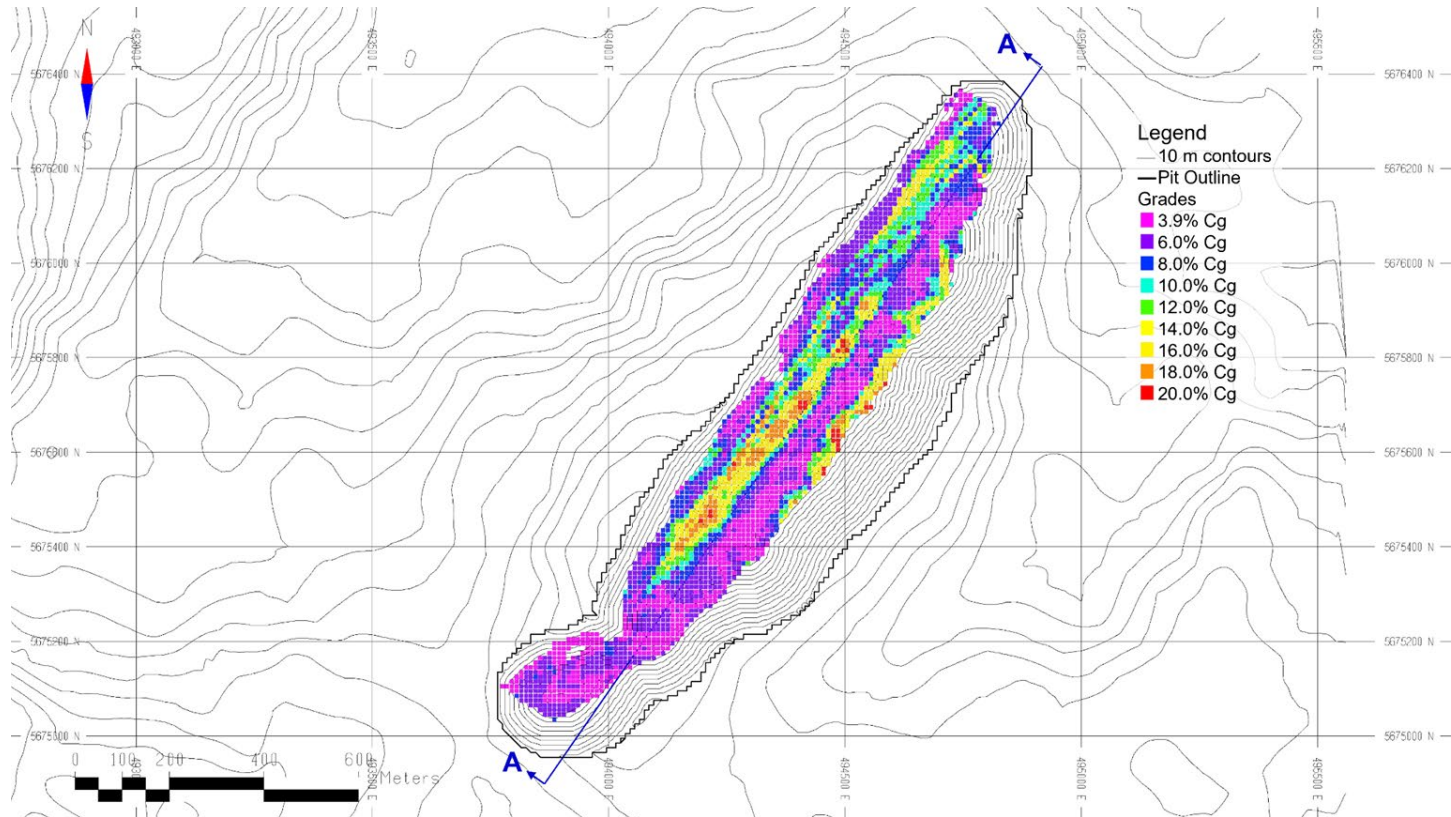
In 2021, the USA did not produce natural graphite. According to the USGS, U.S. natural graphite imports for 2021 were estimated at **53,000t**, about 57% of which were flake and high-purity flake. With **6,300,000 t** of graphite in the ground (Indicated resources) at Lac Tétépisca, **Focus potentially holds sufficient flake graphite resources to meet current US demand for the next 50+ years!**



# Lac Tétépisca Project Map



# Lac Tétépisca Project Map



# Lac Tétépisca Project

## MOGC Deposit Geometallurgical Study Proposal:

On March 4, Focus applied for a \$400,000 grant from the Québec Ministry of Mines (“MERN”) to support a geometallurgical study of the MOGC deposit.

A “GeoMet” study is a recent practice in the mining industry – combines geology, mineralogy, geochemistry and geostatistics with metallurgy, or, more specifically, extractive metallurgy, to create a spatially based predictive model for mine production planning in ore deposits with complex or variable ores, and for risk management and mitigation during ore processing plant design.

The principal objective of the study is to design a metallurgical process for the future Lac Tétépisca ore processing plant that will be optimized to ensure the maximum recovery of large flakes and the highest possible Cg grades in concentrate.

# Lac Tétépisca Project

## Next Steps:

- On March 15, Focus began drill testing a second graphitic zone discovered at Lac Tétépisca in 2014 that is parallel to the MOGC but located 2 km to the west. Eleven paragneiss grab samples collected along a 900 m segment of this new graphitic zone returned grades ranging from **3.86% Cg** to **54.20% Cg**, with seven grab samples containing over **16% Cg**.
- Phase 1 is part of a broader 15,000 m drilling program designed to explore for satellite deposits within a radius of five km of the MOGC deposit. The first objective of the program is to confirm Focus' hypothesis that the Southwest MOGC and West Limb targets hold significant graphite mineralization potential. Both targets are close to the MOGC graphite deposit and have similar geophysical characteristics, and they are interpreted as being structurally and genetically related, representing the nose and west limb of an anticline fold, respectively.





# Lac Tétépisca Project

## Next Steps:

- On March 28, Focus met with the Council of the Pessamit Innu on whos Nitassinan (traditional lands) the Lac Tétépisca project is found.
- We listened to their concerns, answered their questions and gained an understanding of their interests and priorities.
- Initial discussions were very positive and the Pessamit expressed an interest in partnering with us to develop this exciting opportunity to supply a mineral (graphite) that is so critical to the green energy revolution.
- The lines of communication are open, and we expect to meet with them again in the summer.

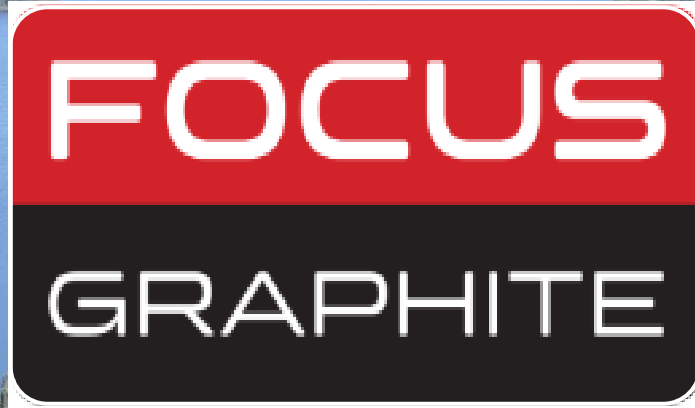
# Quebec Graphite Mine Comparison

**Table 1: Graphite deposit tonnage and grades, Côte-Nord, Laurentides and Lanaudière administrative regions of Québec (version March 28, 2022).**

No.	Project	Owner	Mineral Reserves and/or Mineral Resources	Ore Tonnage (Mt)	Graphitic carbon grade (%Cg)	Contained graphite (Mt)
1	Lac Tétépisca	Focus Graphite	Indicated mineral resources (2022)	59,3	10,61%	<b>6,30</b>
2	Lac Guérêt	Mason Graphite	Proven and probable mineral reserves (2018) first 25 years of mining Proven and probable mineral reserves (post 25 years)	4,7 58,1	27,80% 16,30%	<b>1,31</b> <b>9,47</b>
3	Matawinie	Nouveau Monde	Probable mineral reserves (2018) Measured and Indicated mineral resources (2020)	59,8 120,3	4,35% 4,26%	<b>2,60</b> <b>5,13</b>
4	Lac Knife	Focus Graphite	Proven and probable mineral reserves (2014) Measured and Indicated mineral resources (2017)	7,9 12,1	15,00% 14,64%	<b>1,19</b> <b>1,77</b>
5	Lac Rainy Nord	Metals Australia	Indicated mineral resources (JORC) (2020)	13,3	11,50%	<b>1,53</b>
6	La Loutre	Lomiko Metals	Indicated mineral resources (2021)	23,2	4,51%	<b>1,04</b>
7	Lac Guérêt South	Berkwood Resources	Indicated mineral resources (2019)	1,8	17,00%	<b>0,30</b>

# Capital Structure and Financial Information

<b>Focus Graphite Inc.</b>	<b>Symbol: FMS</b>
Listed Exchange	TSX Venture
Market Capitalization	\$ 35,860,000
Common shares outstanding	551,663,897
Cash & Investments	\$ 5,700,000
Recent Price (Mar. 29, 2022)	\$0.065
52-week Range	\$0.055 - \$0.16



**Investor Contact:**  
**Kimberly Darlington**  
**[kdarlington@focusgraphite.com](mailto:kdarlington@focusgraphite.com)**