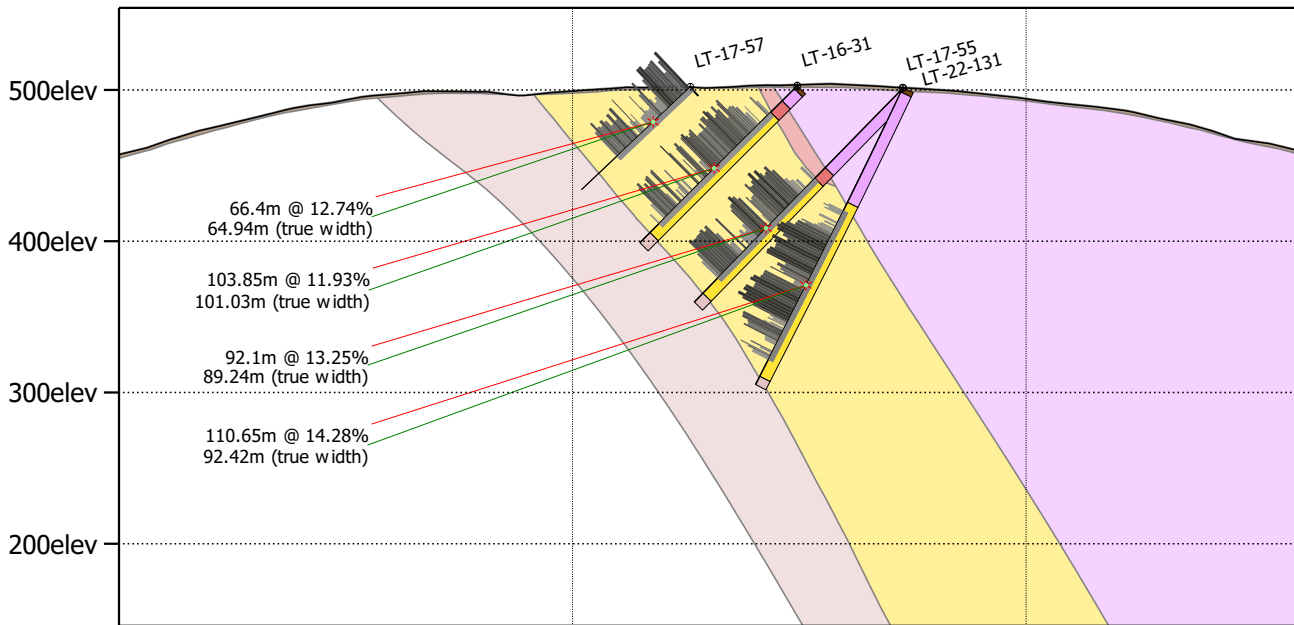


NW

MOCG Section L7+00S

SE



x: 493956m
y: 5675755m

x: 494211m
y: 5675596m

x: 494465m
y: 5675437m

Geological Interpretation

- 0 Overburden
- 1 Dolomitic Marble HangingWall
- 2 HangingWall Iron formation
- 3 Graphite Mineralized Zone
- 4 FootWall Paragneiss
- 5 FootWall Iron Formation

Graphitic Carbon (%)

- (lab results)
- | | | |
|---|---|---|
| < 0 | < 15 | ≥ 25 |
| < 5 | < 20 | |
| < 10 | < 25 | |



Scale: 1:5,000

0m

200m

