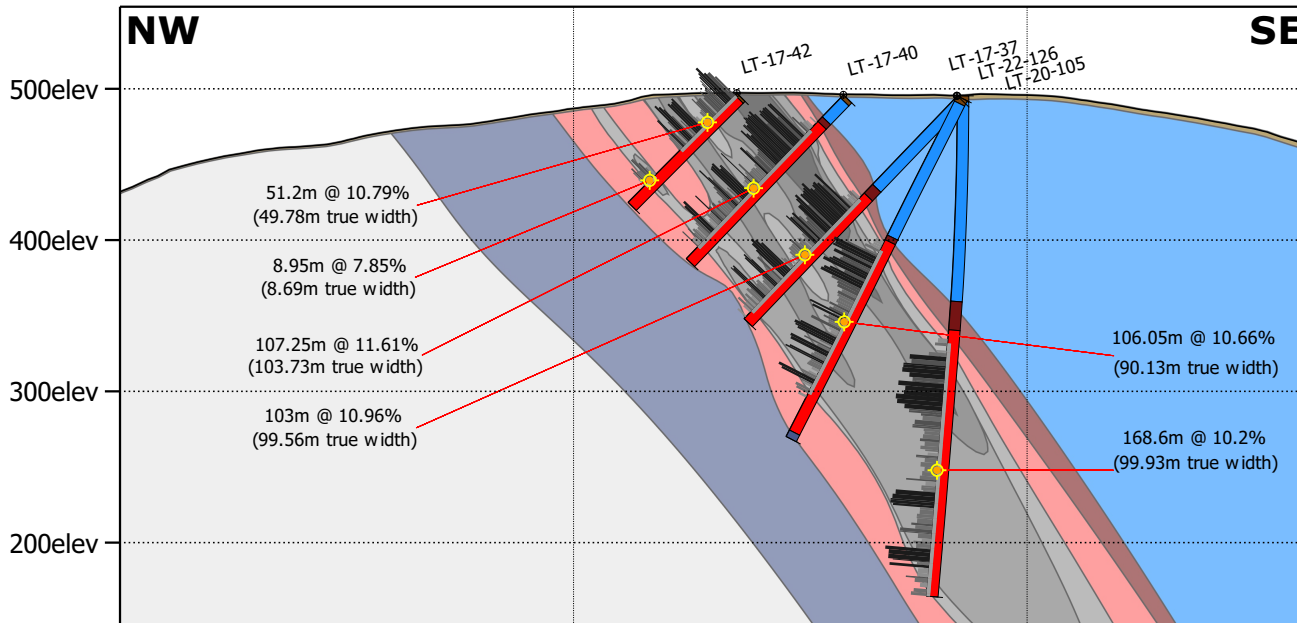


MOCG Section L4+50S



x: 494082m
y: 5675961m

x: 494336m
y: 5675802m

x: 494590m
y: 5675643m

Geological Interpretation

- 0 Overburden
- 1 Dolomitic Marble HangingWall
- 2 HangingWall Iron formation
- 3 Graphite Mineralized Zone
- 4 FootWall Paragneiss
- 5 FootWall Iron Formation

Graphitic Carbon (%)

- (lab results)
- | | |
|----------------------------------------------------------------------------------|----------------------------------------------------------------------------------|
| < 0 | < 8 |
| < 3 | < 15 |
| < 5 | ≥ 15 |



Scale: 1:5,000

