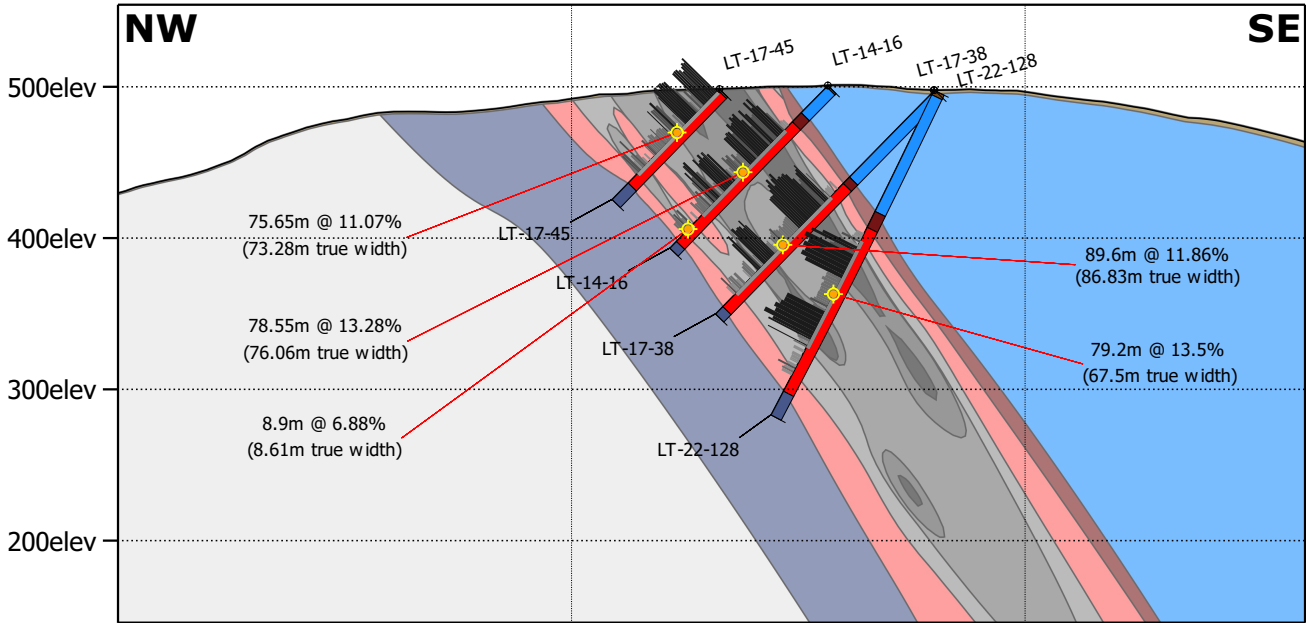


MOCG Section L5+50S



x: 494029m
y: 5675876m

x: 494283m
y: 5675717m

x: 494537m
y: 5675558m

Geological Interpretation

- 0 Overburden
- 1 Dolomitic Marble HangingWall
- 2 HangingWall Iron formation
- 3 Graphite Mineralized Zone
- 4 FootWall Paragneiss
- 5 FootWall Iron Formation

Graphitic Carbon (%)

- (lab results)
- | | |
|--|--|
| < 0 | < 8 |
| < 3 | < 15 |
| < 5 | ≥ 15 |



Scale: 1:5,000

0m 200m