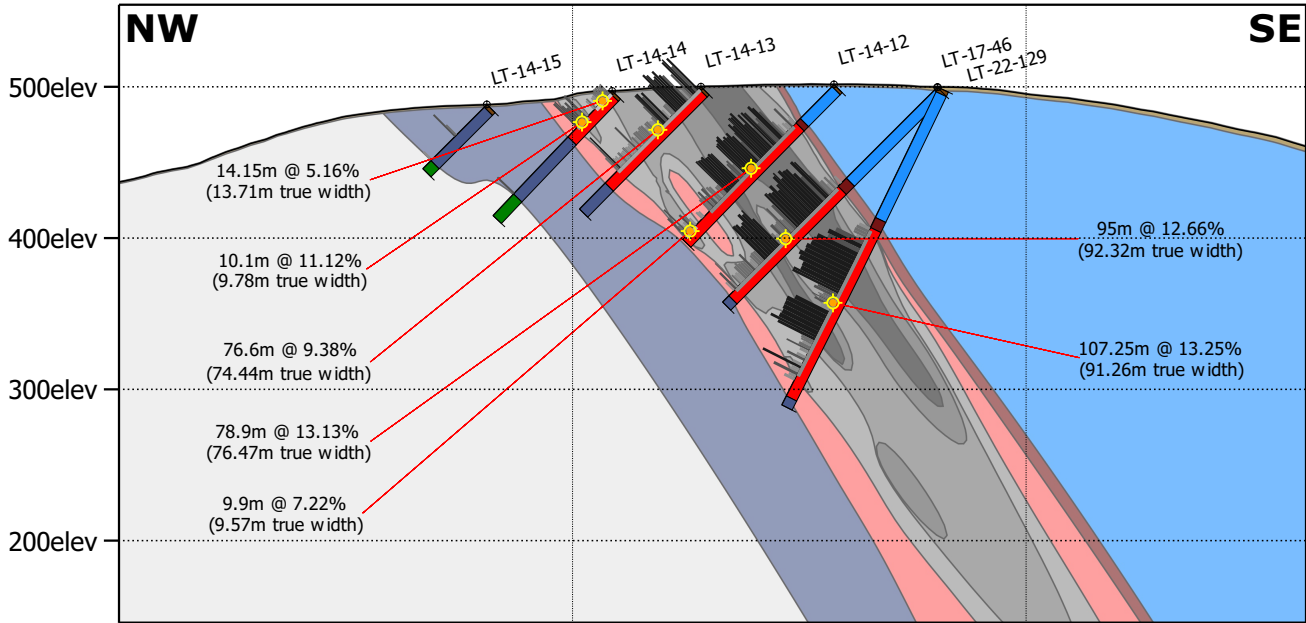


MOCG Section L6+00S



x: 494002m
y: 5675833m

x: 494257m
y: 5675674m

x: 494511m
y: 5675516m

Geological Interpretation

- 0 Overburden
- 1 Dolomitic Marble HangingWall
- 2 HangingWall Iron formation
- 3 Graphite Mineralized Zone
- 4 FootWall Paragneiss
- 5 FootWall Iron Formation

Graphitic Carbon (%)

- (lab results)
- | | |
|--|---|
| < 0 | < 8 |
| < 3 | < 15 |
| < 5 | ≥ 15 |



Scale: 1:5,000

