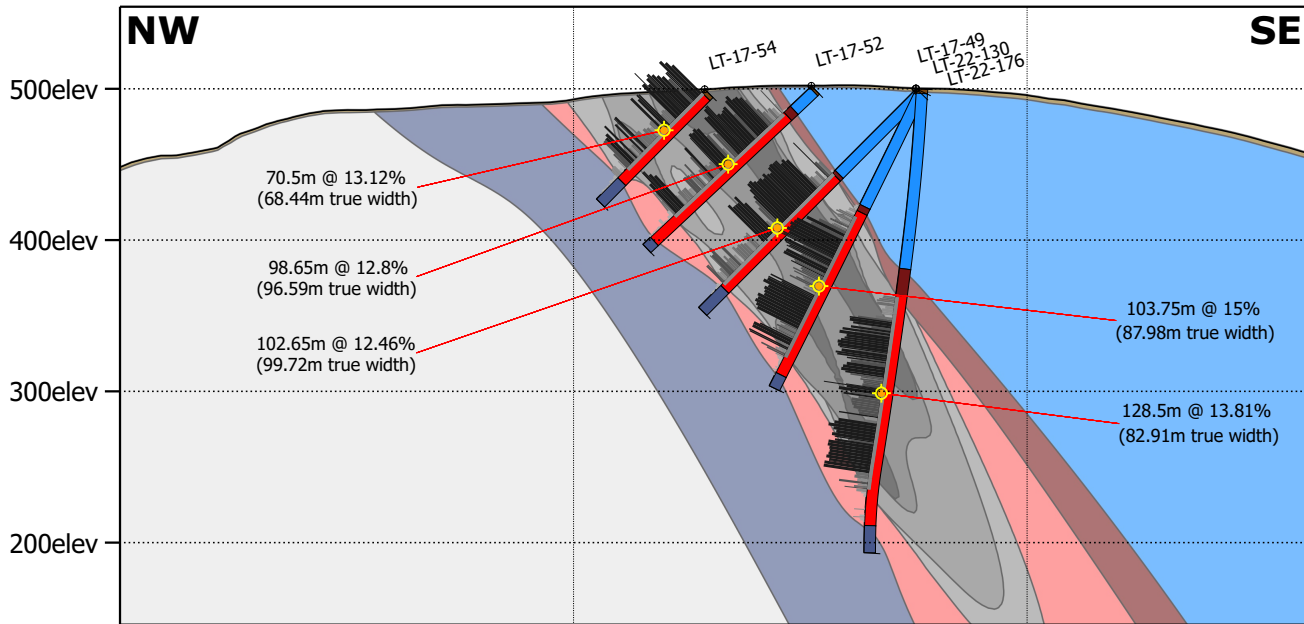


MOGC Section L6+50S



x: 493976m
y: 5675791m

x: 494230m
y: 5675632m

x: 494484m
y: 5675473m

Geological Interpretation	Graphitic Carbon (%) (lab results)
0 Overburden	< 0 < 8
1 Dolomitic Marble HangingWall	< 3 < 15
2 HangingWall Iron formation	< 5 ≥ 15
3 Graphite Mineralized Zone	
4 FootWall Paragneiss	
5 FootWall Iron Formation	

